

MODEL

BOSS 91

Code: 80630087

SUBMERSIBLE PUMP FOR DRAINAGE AND WASTE WATER APPLICATIONS

HEAD
UP TO
11.4MTS

FLOW
UP TO
6.5L/S

FLOAT
AUTO
YES

SUPPLY
VOLTS
230 V

All BOSS products are supplied with the confidence of high quality and reliability as standard.

- Full service & technical back up



DURABILITY



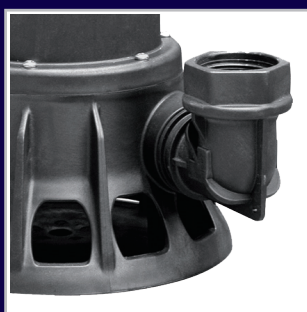
Anti-corrosive
full rust proof materials

OPERATION



Automatic float switch
control

CAPABILITY



Solids handling
up to 38mm

INSTALLATION



Fitted with 10 Metres
of mains cable

BOSS 91

TECHNICAL SPECIFICATION



HEAD UP TO	11.4 METRES
FLOW UP TO	6.5 L/SEC
CLOSED VALVE	12 METRES
MIN SUMP DIMENSION MM	H600x W600x D600
OUTLET SIZE	1 1/2" F BSP
IMMERSION DEPTH MAX	10 METRES
MIN WATER LEVEL	170 MM (auto)
SOLIDS HANDLING	38 MM
MAX LIQUID TEMP	40°C
MOTOR SIZE	0.75 KW
MAINS SUPPLY	230 VOLT
RUNNING CURRENT	5.6 AMPS
FLOAT SWITCH	YES
SUPPLY CABLE	10 METRES

APPLICATIONS

Multi purpose submersible electric drainage pump manufactured in rust free anti-corrosion material. Designed for pumping clean and waste water containing solids in suspension up to a maximum of 38mm in diameter.

Ideal for cellar drainage, pumping out flooded areas and water gardening applications.

CONSTRUCTION FEATURES OF THE PUMP

Pump body and impeller made in technopolymer, motor casing and shaft made in stainless steel.

Motor shaft triple lip seal arrangement with Viton V ring.

CONSTRUCTION FEATURES OF THE MOTOR

Dry asynchronous sealed motor type cooled by the pumped liquid. Rotor mounted on greased for-life bearings, oversized and selected to guarantee greater noise reduction and durability.

Thermal overload motor protection as standard, auto-resetting.

Constructed in accordance with the IEC 2-3 IEC61-69 (EN 60335-2-41) standards.

Motor Protection Class: IP68

Insulation Class: F

Standard Voltage: 230 Volt 50Hz Single-Phase

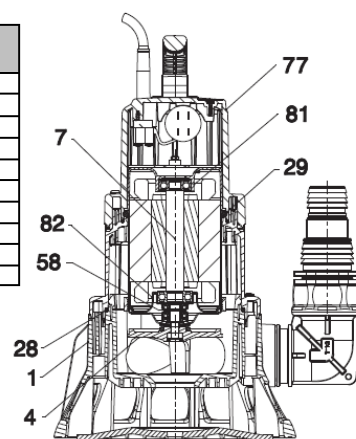
Motor Rating: Continuous even with the motor partially submerged



- Complete with a 3 level hose connection elbow.
- Supplied loose

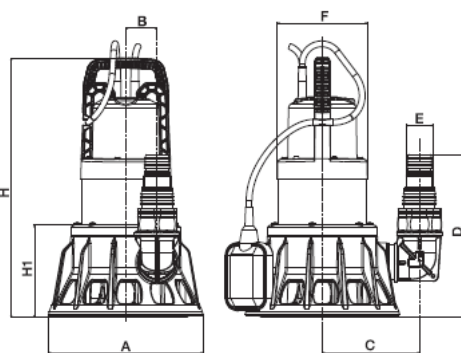
MATERIALS

NO.	PARTS IN CONTACT WITH THE PUMPED LIQUID	MATERIALS
1	PUMP BODY	TECHNOPOLYMER
4	IMPELLER	TECHNOPOLYMER
7	MOTOR SHAFT	STAINLESS STEEL AISI 416
28	O-RING GASKET	NBR
29	O-RING GASKET	NBR
77	TOP BODY	TECHNOPOLYMER
58	CERAMIC BUSH	STAINLESS STEEL AISI 416
81	UPPER BEARING SUPPORT	CAST ALLUMINIUM
82	LOWER BEARING SUPPORT	CAST ALLUMINIUM
	MAIN CABLE & FLOAT CABLE	HO7 RN-F (PCP TYPE EM2)

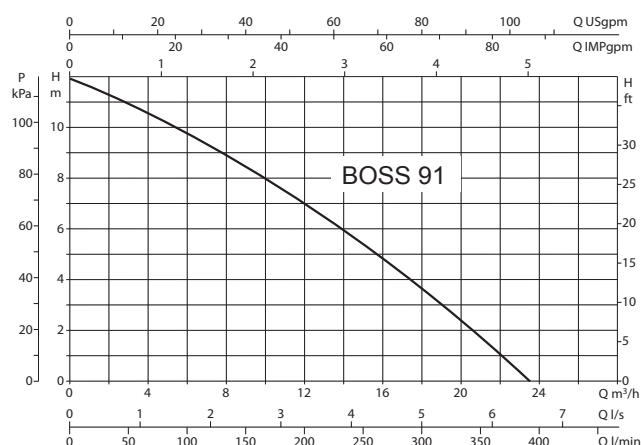


DIMENSIONS

MODEL (mm)	A	B	C	D	E	F	H	H1	DIA DNM	WEIGHT KG
BOSS 91	240	49	150	250	M40	140	400	142	1 1/2" F BSP	5.1



PERFORMANCE



AMS Pumps
BSS | Specialist in Pumping Systems

Tel: 0870 609 2101
 Email: ampumps@bssgroup.com
 Web: www.bssindustrial.co.uk

The information contained in this publication is believed to be correct and complete at the time of printing but it is an approximate guide only. Due to limitations in the printing process, images may not be representative of their true colours and colour variations may occur due to the natural origin of the products. Stock may vary from branch to branch and is subject to availability. All photographs are a guide only and do not necessarily represent the products available. BSS Industrial reserves the right to change product details and designs without prior notice. To the fullest extent permitted by law, BSS Industrial assumes no liability or responsibility for typographical and clerical errors and omissions in this publication (which may be corrected by us without liability) and this publication does not form the basis of any contract. All products sold are subject to our Group Sale Terms, a copy of which are available on request or are otherwise available at www.bssindustrial.co.uk. Travis Perkins Group is the owner of the registered trademark BOSS.

Registered Office: Lodge Way House, Lodge Way, Harlestone Road, Northampton NN5 7UG