

Standard Tail Piece Connections

1. Isolate the valve from the hot and cold water supplies.
2. Unscrew the compression inlet joint and union tail joint to remove the union tail housing from the pipework.
3. Remove and clean the filters that are contained within the hot and cold water inlet tailpieces.
4. Remove and clean the insert check valves, which are contained within the hot and cold inlet housings.
5. If any of the filters or check valves are damaged they must be replaced by components supplied in the service kit.

AC Option Tail Piece connections

1. Isolate the valve from the hot and cold water supplies.
2. Remove the AC access filter cap using a suitably sized spanner.
3. Remove and clean the filter screens contained within the valve body.
4. Unscrew the compression inlet joint and AC tailpiece union joint to remove the AC body from the pipework.
5. Remove and clean the insert check valves, which are contained within the hot and cold AC bodies.
6. If any of the filters or check valves are damaged they must be replaced by components supplied in the service kit.

Internal Valve Components

1. Isolate the valve from the hot and cold water supplies.
2. Remove the cap from the top of the valve.
3. Remove the temperature locking ring from the temperature adjustment spindle.
4. Using a suitably sized spanner, unscrew the valve head assembly from the main body taking care that the head assembly does not spring off.
5. Remove the thermostat and the internal shuttle from the valve body.
6. Clean thoroughly all components to remove any debris or scale, which may have accumulated.
7. If any of the components are damaged they must be replaced by components in the Internal Components Service Kit.

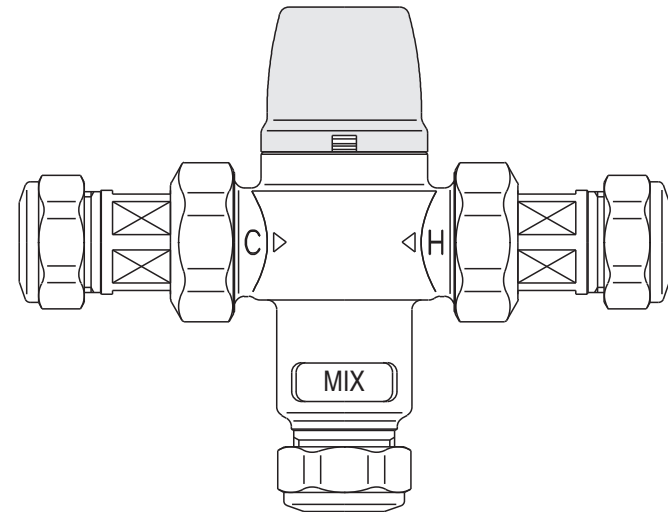
Whilst every care has been taken to ensure that the information included in this document was accurate at the time of printing, we reserve the right to change specifications at any time. E&OE.



Registered Office: Lodge Way House
Lodge Way, Harlestone Road,
Northampton. NN5 7UG
Registered in England No 60987.



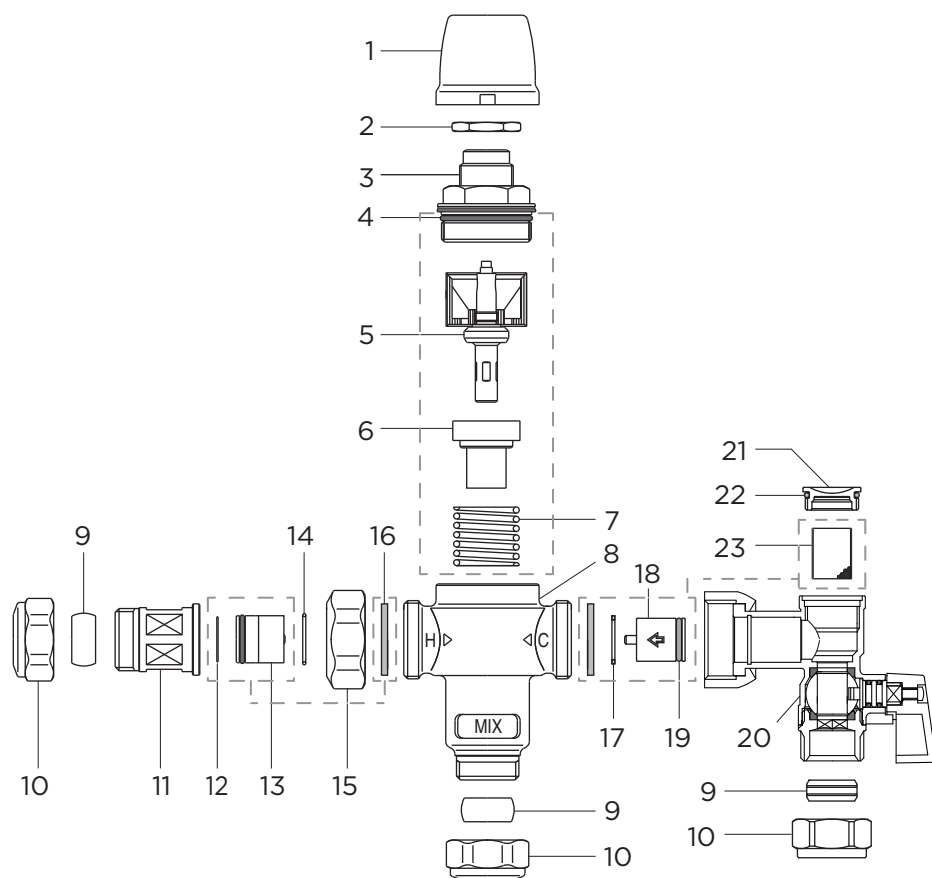
THERMOSTATIC MIXING VALVE TMV2 & TMV3



SERVICING INSTRUCTIONS

The following instructions should be followed in conjunction with the Installation, Commissioning and Servicing instruction supplied with the valve. These instructions cover the following products;

- 15mm and 22mm Standard 'T' Pattern TMV3 & TMV2 Valves.
- Internal Component Service Kit.
- Standard Tail Piece Service Kit
- AC Tail Piece Service Kit.



Item	Description		Quantity per Service Kit		
			Standard Tail Check Valve Kit	AC Tail Check Valve Kit	Internal Components Service Kit
	Service Kit Code	15mm	86330007	86330062	86330051
		22mm	86330018	86330073	
1	Cap				
2	Temperature Locking Ring				
3	Valve Head Assembly				
4	Valve Head Assembly 'O' Ring				1 off
5	Thermostatic Element & Shuttle				1 off
6	Flow Conveyor				1 off
7	Spring				1 off
8	Valve Body				
9	Compression Olive				
10	Compression Nut				
11	Inlet Tail Housing				
12	Inlet Tail Filter		2 off		
13	Check Valve Cartridge		2 off		
14	Cartridge Retaining Clip				
15	Union Nut				
16	Union Joint Gasket		2 off	2 off	
17	Check Valve Retaining Ring			2 off	
18	AC Check Valve Cartridge			2 off	
19	AC Check Valve 'O' Ring			2 off	
20	AC Inlet Tail Housing				
21	AC Filter Access Cap				
22	AC Filter Access Cap 'O' Ring				
23	AC Filter Screen			2 off	
24	Instruction Leaflet (Not Shown)		1 off	1 off	1 off