

Heat Meter

In-line mounted compact - Pulsed and Mbus

- MID (Class 3) approved
- EMC (Class C) approved according to EN1434
- Pulsed output [KW/h] and M-bus versions
- 3-Volt Lithium battery operated calculator
- IP54 protecting rating
- Vertical and horizontal mounting
- Temperature range: 10 - 90°C
- Ambient temperature: 0 - 55°C
- Temperature resolution: 0.01°C
- Meters to be sized between transitional flow and nominal flow
- Isolating ball valve pocket included
- Pulsed output value 1KW/h
- Installation on return pipe only

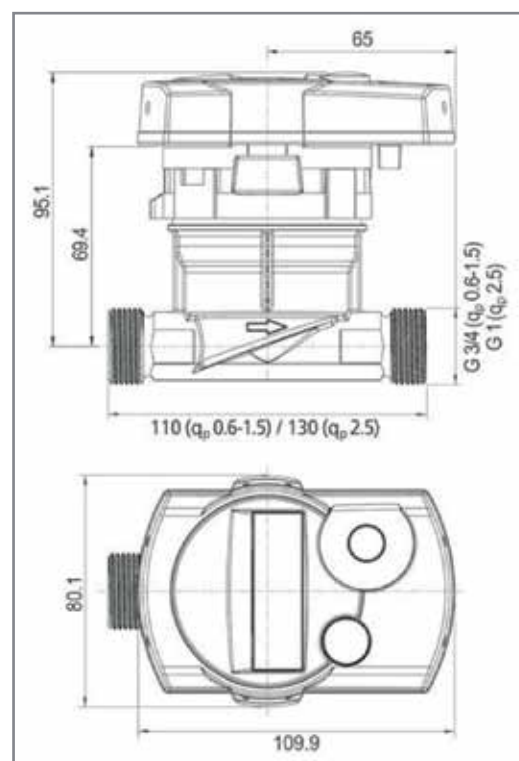


TECHNICAL DATA

BSS Code		DN Size (mm)	Max Flow (m³/h)	Nominal Flow (m³/h)	Trans Flow (L/h)	Min Flow (L/h)
Pulsed	Mbus					
38700011	38700033	20	3.0	1.5	15	3
38700022	38700044	25	5.0	2.5	25	5

DIMENSIONS

Nominal flow	m³/h	1.5	2.5
Installation length - flow sensor	m³/h	110	130
External thread flow sensor		G¾	G1
Calculator housing	mm	80.1 x 109.9	
Height from pipe centre	mm	69.4	
Height with calculator attached	mm	95.1	



Heat Meter

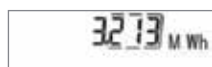
In-line mounted compact - Pulsed and Mbus

The menu

The individual loops are called up using the operating key.

After one minute of non-use, the display returns to the standard display: 'accumulated heat energy'.

MAIN LOOP



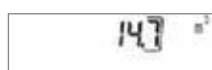
1] Total heat energy (standard display)



2] Segment test - all segments are triggered simultaneously



3] Heat energy at last annual billing date, alternating with last billing date



4] Total volume since installation in m³



5] Current power in kW



6] Current flow in m³/h



7] Current date



8] Error message (alternating binary and hexadecimal display)



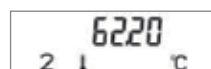
TECHNICIAN'S LOOP



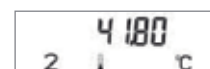
1] Maximum power in kW



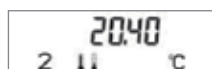
2] Maximum flow in m³/h



3] Maximum flow temperature in °C



4] Return flow temp. °C



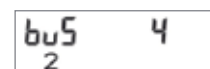
5] Temperature difference



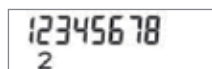
6] Days in operation since verification



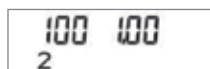
7] Pulse value: pulse per litre



8] Mbus address



9] Serial number of the heat meter



10] Firmware / software version

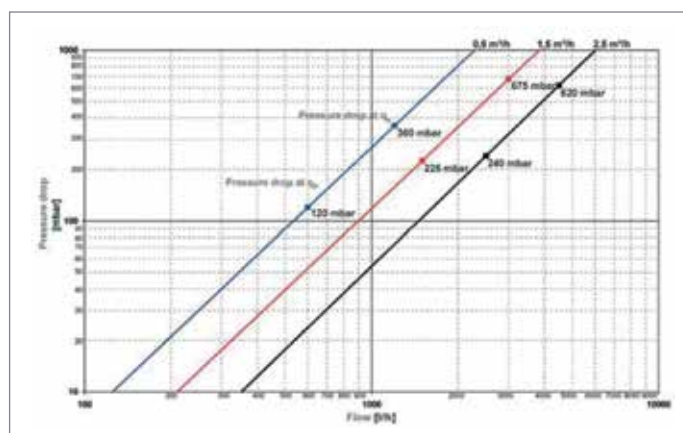
STATISTICS LOOP



1] Heat energy at next-to-last billing date, alternating with next-to-last billing date



2] Monthly energy values alternating with the corresponding billing dates



All sizes are approximate and are given for guidance only.

Products and specifications may be subject to change from those shown without notice.