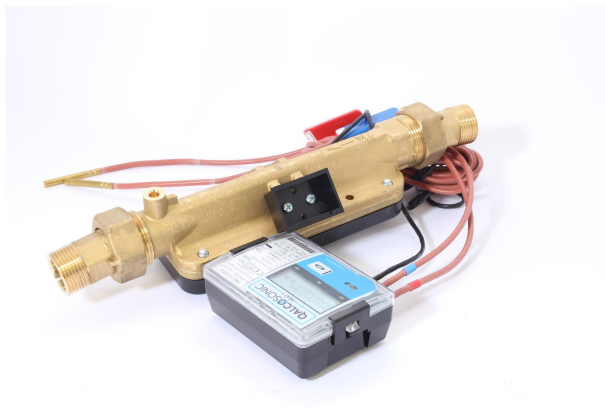




BOSS™ Ultrasonic Heat Meters

Data Sheet



Specification:

- MID Class 2 compliant.
- RHI Compliant.
- Temperature range of 3 to 130°C.
- Suitable for MTHW, LTHW and CHW systems.
- Suitable for vertical and horizontal installation.
- Pulsed output value in both kWh and m³ per pulse.
- Pockets included.
- LCD display, 8 digits plus additional symbols.
- Display units in MWh and kWh.
- Complete with 3 metre PT500 flow/return sensors (5 and 10 metre sensors optional).
- 3.6 V lithium battery power supply (230 V and 24 V supplies optional).
- IP54 protection class housing.
- Pulse output (MBUS and Modbus as options).

BOSS™ 38USHW Threaded Specification:

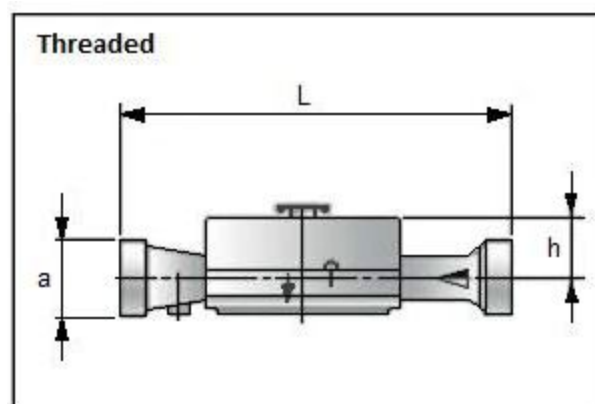
BOSS™ 38USHW BSS Code	DN Size	Nom. Flow	Nom. Press.	Max. Flow	Min. Flow	Flow @ 0.1 bar Press. Drop	Pulsed Output Value	Connection Size
	mm	m³/h	bar	m³/h	m³/h	m³/h	kWh per pulse	inches
38401205	15	1.5	16	3	0.015	1.3/1.2	1	3/4
38401216	20	2.5	16	5	0.025	1.7/2.1	1	1
38401227	25	3.5	16	7	0.035	4.4	1	1-1/4
38400845	32	6	16	12	0.060	4.4	10	1-1/4
38400856	40	10	16	20	0.100	8.9	10	2

BOSS™ 38USH Flanged Specification:

BOSS™ 38USH BSS Code	DN Size	Nom. Flow	Nom. Press.	Max. Flow	Min. Flow	Flow @ 0.1 bar Press. Drop	Pulsed Output Value	Connection Class
	mm	m³/h	bar	m³/h	m³/h	m³/h	kWh per pulse	
38400867	50	15	25	30	0.15	13.3	10	PN25
38400878	65	25	25	50	0.25	30	10	PN25
38400889	80	40	25	80	0.40	36	100	PN25
38400908	100	60	25	120	0.60	56	100	PN25
38400919	125	100	25	200	3.0	71	100	PN16
38400930	150	150	16	300	6.0	89	100	PN16
38400941	200	250	16	500	9.0	102	100	PN16

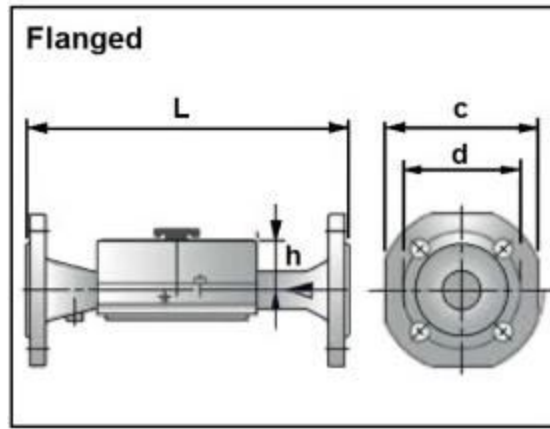
BOSS™ 38USHW Dimensions:

BOSS™ 38USHW BSS Code	DN Size	Connection Size a	Bore	Length L	Height h	Weight
	mm	inches	inches	mm	mm	kg
38401205	15	¾	½	110	50	1.6
38401216	20	1	¾	130	61	1.8
38401227	25	1¼	1	260	61	4.5
38400845	32	1¼	1	260	61	5.9
38400856	40	2	1½	300	61	10



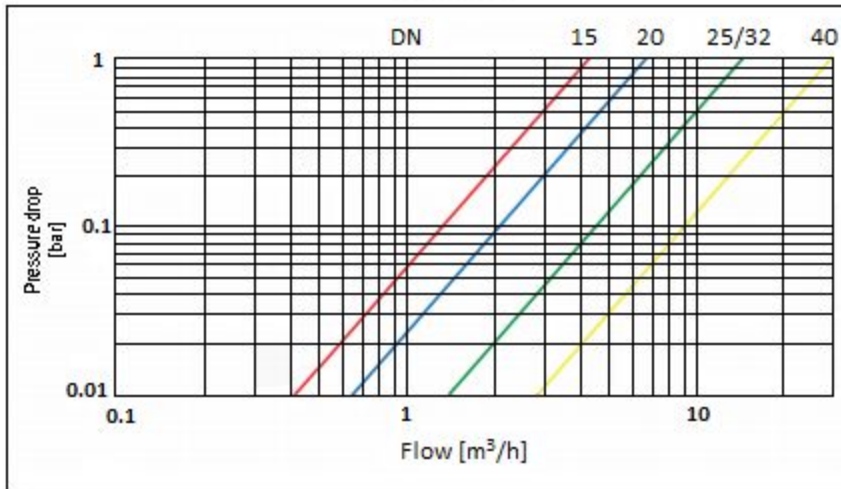
BOSS™ 38USH Dimensions:

BOSS™ 38USH BSS Code	DN Size d	Connections	No. Of Bolts	Width c	Length L	Height h	Weight
	mm		4	mm	mm	mm	kg
38400867	50	PN25	8	165	270	61	15
38400878	65	PN25	8	185	300	63	18
38400889	80	PN25	8	200	300	70	20
38400908	100	PN25	8	235	360	75	25
38400919	125	PN16	8	250	250	275	39
38400930	150	PN16	8	285	300	325	48
38400941	200	PN16	12	340	350	352	55



Pressure Drop Rates:

Threaded



Flanged

