

## BOSS 38CM/38HM

### Multi-Jet Water meter

#### Data Sheet

#### General Description

BOSS Multi-Jet water meters come with a pulse output as standard alongside a pair of unions and are available in sizes from 25mm to 50mm.

#### Features and Benefits

- Multi-Jet Design
- WRAS approved
- MID approved for vertical and horizontal installation
- Pulsed output as standard\*
- 360° rotating dial
- Quiet operation

\* MBUS output models also available upon request

#### Standard Features

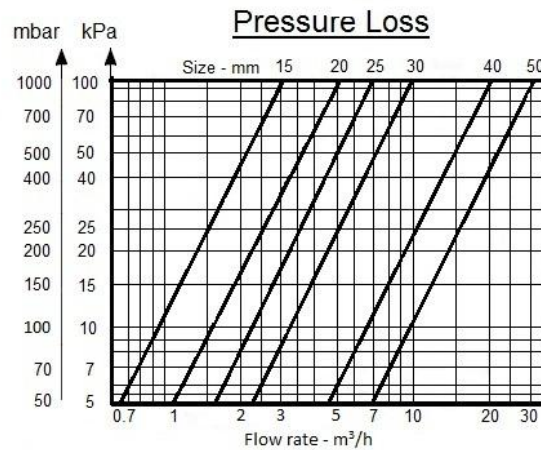
- For cold water (up to 30°C) and hot water (up to 90°C)
- DZR Brass body, Epoxy powder coated
- Working Pressure: up to 16 Bar
- Dry Dial
- 5 black rollers (cubic metres) and 3 red rollers (litres)
- Meters supplied with BSP male unions
- Pointer minimum reading 0.1 litres
- Integral strainer

#### Technical Data

BOSS™ 38CM BSS Code	BOSS™ 38HM BSS Code	DN Size	Min Flow	Trans Flow	Nom Flow	Max Flow	Starting Flow	Pulse Value
(Cold 30°C)	(Hot 90°C)	mm	l/h	l/h	m³/h	m³/h	l/h	litres
38400439	38400590	25	63	100.8	6.3	7.875	10	10
38400450	38400609	32	100	160	10	12.5	10	10
38400461	38400620	40	160	256	16	20	20	10
38400472	38400631	50	250	400	25	31.25	20	100

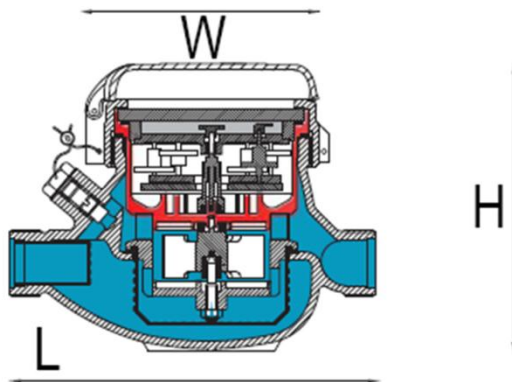
\*MID = H R100 / R80

## Pressure Loss



## Dimensions

BOSS™ 38CM BSS Code	BOSS™ 38HM BSS Code	DN Size	Body Length (L)	Length with couplings	Height (H)	Width (W)	Weight
(Cold 30°C)	(Hot 90°C)	mm	mm	mm	mm	mm	kg
38400439	38400590	25	260	370	115	104	2.1
38400450	38400609	32	260	380	115	105	3.2
38400461	38400620	40	300	440	148	125	5.4
38400472		50	300	460	173	126	8.2
	38400631	50	200	360	173	126	8.2



## Terms of Reference

- **DN Size (mm)** – Refers to the inside bore diameter.
- **Minimum Flow Rate (l/h)** – The absolute minimum flow required for the unit to function.
- **Maximum Flow Rate (m³/h)** – Refers to the emergency flow rate in the event of system failure. Damage may result.
- **Transitional Flow Rate (l/h)** – Point at which the flow rate is high enough to achieve an accurate level of measurement.
- **Nominal Flow Rate (m³/h)** – Typical application for everyday usage.
- **Starting Flow Rate (l/h)** – The required flow velocity to enable the meter to register flow.
- **Pulse Value** – The volume of water required to pass through the meter to generate a pulse.

All sizes are approximate and are given for guidance only.

Products and specifications may be subject to change from those shown without notice.