



BOSS™ 38CS/HS

Single-Jet Water Meter

Data Sheet

General Description

BOSS Single jet water meters are available with and without pulsed outputs. Complete with brass unions and available in sizes 15mm and 20mm.



MID APPROVED FOR
BILLING APPLICATIONS

Measuring Instruments Directive



APPROVED PRODUCT

Features and Benefits

- Single-Jet Design
- WRAS approved
- MID approved for horizontal installation
- Pulsed and non-pulsed versions*
- 360° rotating dial
- Quiet operation

* MBUS output models also available upon request

Standard Features

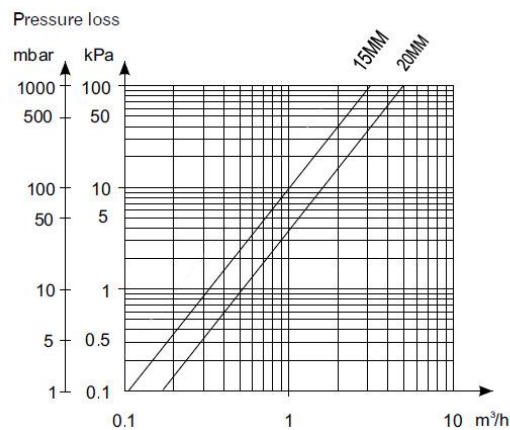
- For cold water (up to 30°C) and hot water (up to 90°C)
- DZR Brass body, Epoxy powder coated
- Working Pressure: up to 16 Bar
- Dry Dial
- 5 black rollers (cubic metres) and 3 red rollers (litres)
- Meters supplied with BSP male unions
- Pointer minimum reading 0.1 litres
- Integral strainer

Technical Data

BOSS™ 38CS BSS Code	BOSS™ 38HS BSS Code	DN Size	Pulsed	Min Flow	Trans Flow	Nom Flow	Max Flow	Starting Flow	Pulse Value
(Cold 30°C)	(Hot 90°C)	mm		l/h	l/h	m³/h	m³/h	l/h	litres
38400398	n/a	15	N	25	120	1.5	3	6	n/a
38400417	38400568	15	Y	25	120	1.5	3	6	1
38400406	n/a	20	N	50	200	2.5	5	8	n/a
38400428	38400579	20	Y	50	200	2.5	5	8	1

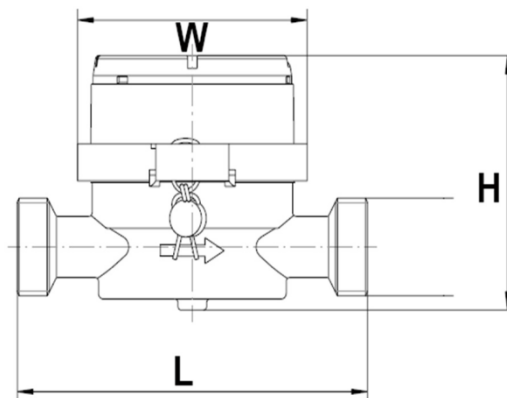
*MID Cold = H R100 / V R50 MID Hot = H R80 / V R40

Pressure Loss



Dimensions

BOSS™ 38CS BSS Code	BOSS™ 38HS BSS Code	DN Size	Body Length (L)	Length with couplings	Height (H)	Width (W)	Weight
(Cold 30°C)	(Hot 90°C)	mm	mm	mm	mm	mm	kg
38400398	n/a	15	110	204	73	76	0.75
38400417	38400568	15	110	204	73	76	0.75
38400406	n/a	20	130	234	74	76	0.8
38400428	38400579	20	130	234	74	76	0.8



Terms of Reference

- **DN Size (mm)** – Refers to the inside bore diameter.
- **Minimum Flow Rate (l/h)** – The absolute minimum flow required for the unit to function.
- **Maximum Flow Rate (m³/h)** – Refers to the emergency flow rate in the event of system failure. Damage may result.
- **Transitional Flow Rate (l/h)** – Point at which the flow rate is high enough to achieve an accurate level of measurement.
- **Nominal Flow Rate (m³/h)** – Typical application for everyday usage.
- **Starting Flow Rate (l/h)** – The required flow velocity to enable the meter to register flow.
- **Pulse Value** – The volume of water required to pass through the meter to generate a pulse.

All sizes are approximate and are given for guidance only.

Products and specifications may be subject to change from those shown without notice.