



BOSS™ FIRE FIGHTING

Data Sheet

General Description

BOSS™ Fire Fighting: Dry Riser Valves, Wet Riser Valves, Inlet Cabinets, Outlet Cabinet.

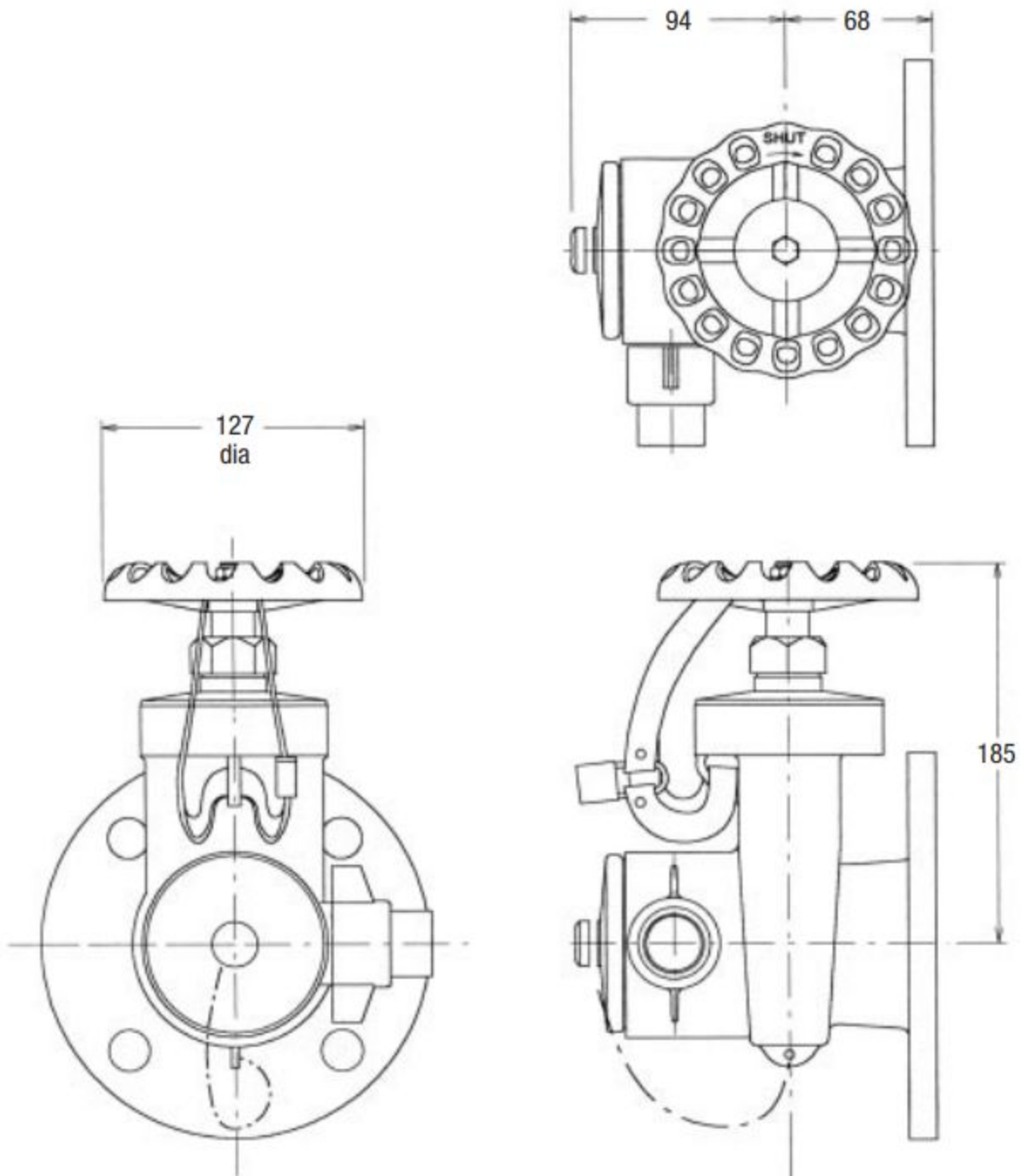
Product codes: Various, please refer to specific product.

Dry Riser Valves

Description	Size	Product Code
BSTD	2½"	25610006
BSTD	3"	25610017
PN16	65mm	25610028
BSPF	65mm	25610039
BSPM	65mm	25610851

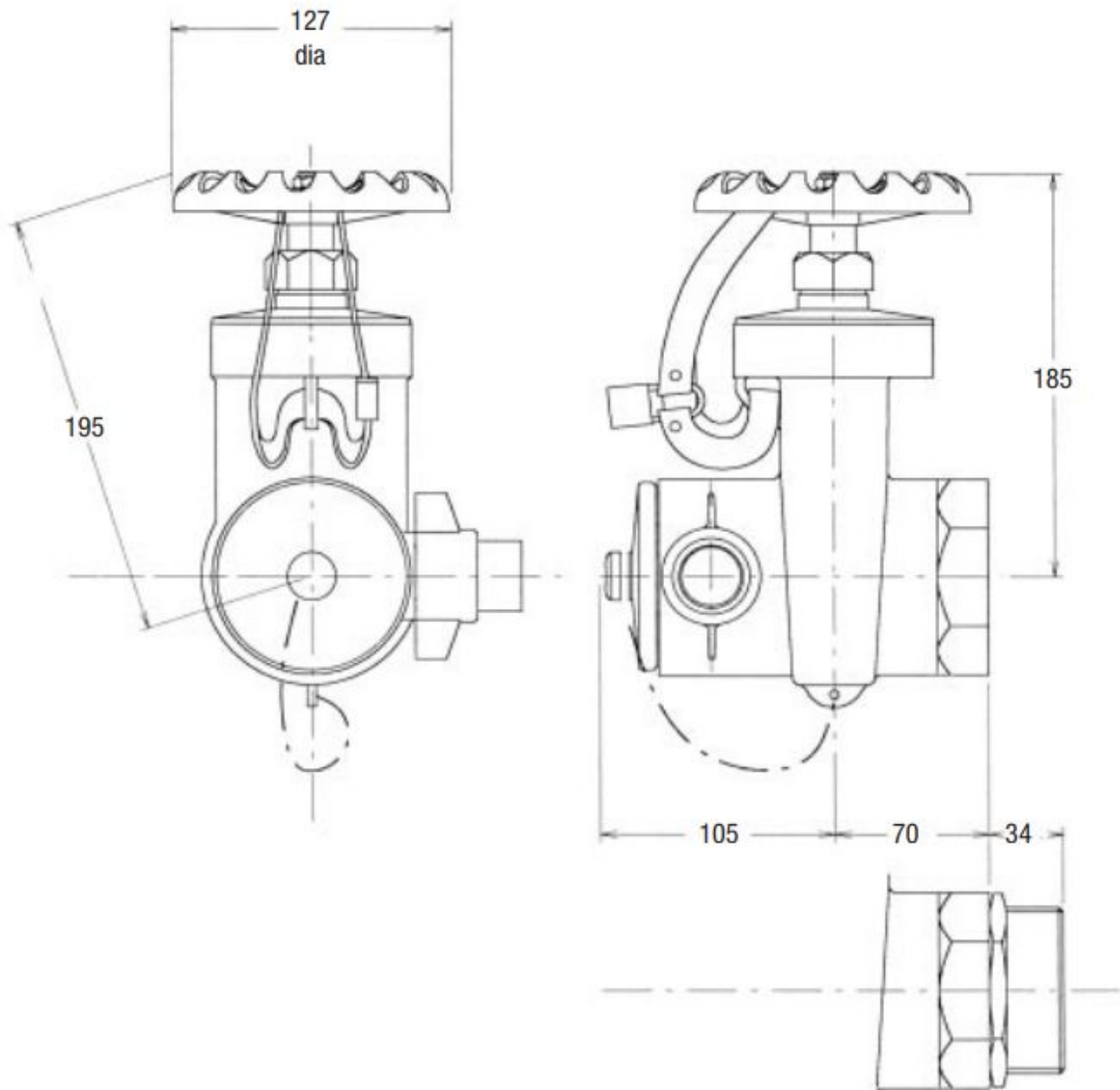
Gate Type Landing Valve for Dry-Risers (Flanged Connection)

Product code:	25610028
Material:	Gunmetal body and valve parts
Inlet Connection:	65mm Flange to BS4504 PN16
Outlet Connection:	2½" British instantaneous female housing coupling to BS336
Supplied complete with:	Strap & padlock, plug & chain
Construction performance to:	BS5041 Part 2
Approximate weight:	8kg



Gate Type Landing Valve for Dry-Risers (Female Connection)

Product Code:	25610039
Material:	Gunmetal body and valve parts
Inlet Connection:	2½" BSP-F
Outlet Connection:	2½" Female instantaneous BS336
Supplied complete with:	Strap & padlock, plug & chain
Construction performance to:	BS5041 Part 2
Approximate weight:	8kg



2-Way Dry-Riser Inlet Breeching

Description	Size	Product Code
BSTD	4"	25610061
PN16	100mm	25610072
BSP	100mm	25610083

Material:

Inlet Connection:

Outlet Connection:

Construction performance to:

Approximate weight:

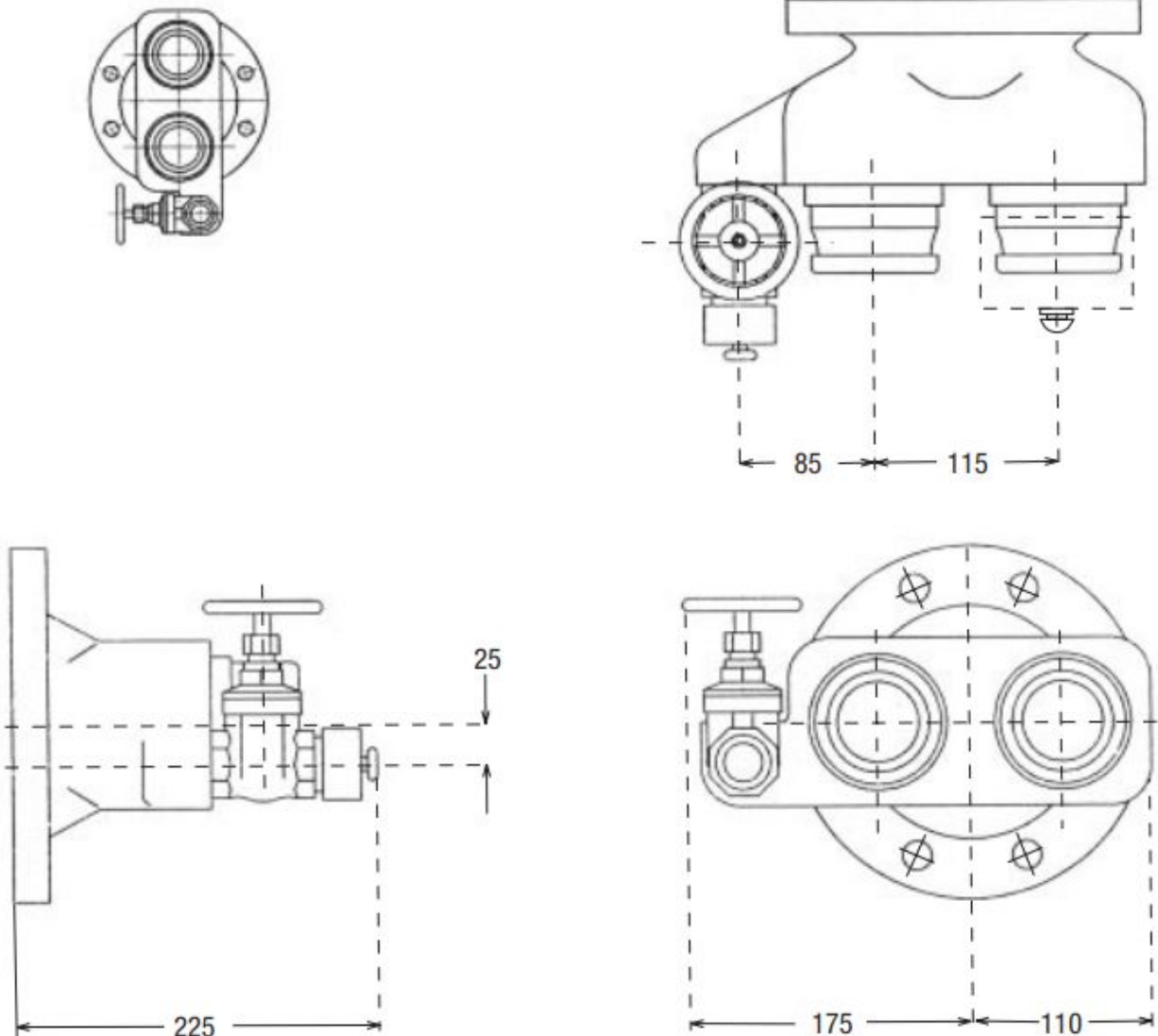
Body: SG Cast Iron to BS2789; Fittings: Gunmetal

2x2½" British instantaneous male hose coupling to BS336

100mm Flange to BS4504 PN16

BS5041 Part 3

14.5kg

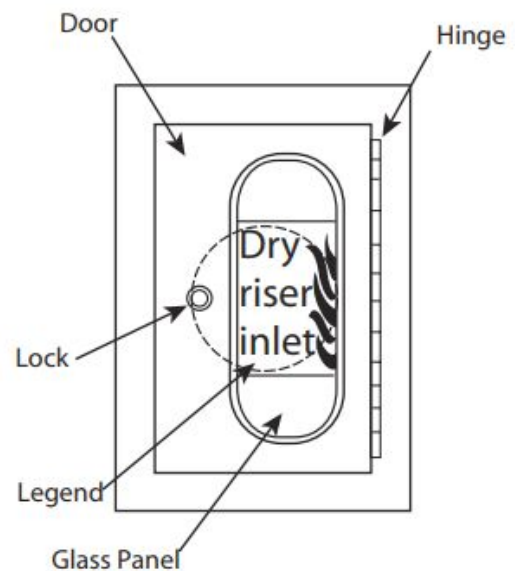
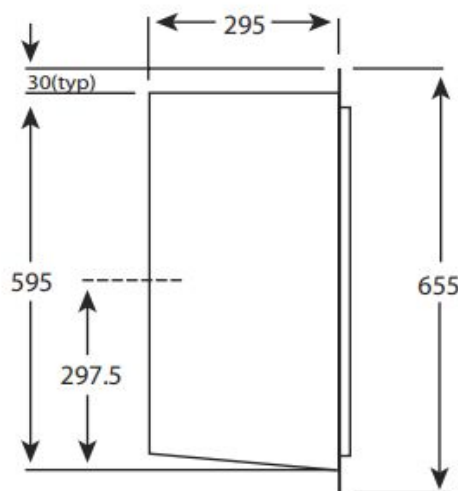
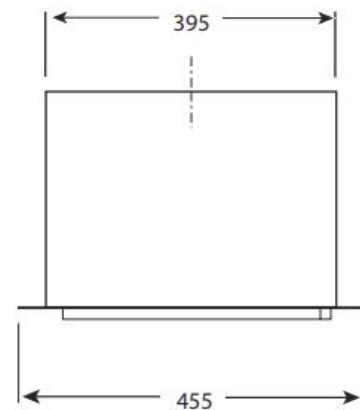


Vertical Dry Riser Inlet Cabinet for Recess Mounting

Product Code: 25610094

Construction	Description
Cabinet	1.5mm Zintec, complete with 230mm hole thru' rear. Finished Ral 3000.
Architrave	2mm Zintec, finished Ral 3000.
Door	1.5mm Zintec, finished Ral 3000.
Glass	6mm thick georgian wired cast glass panel, complete with self-adhesive label (white lettering on red background).
Lock	Yale slamlock keydalike.
Hinge	Stainless steel piano hinge/

- To suit structural opening of:- 405mm wide x 605mm high.
- Unit is right hinge only.
- Alternative colour finishes available within BS and RAL ranges (depending on order quantity).

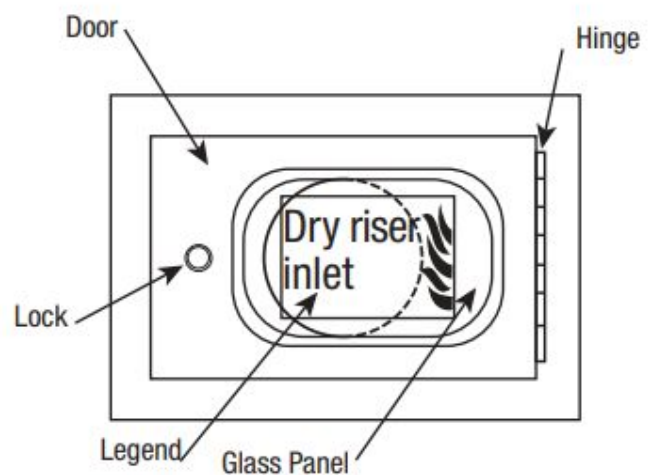
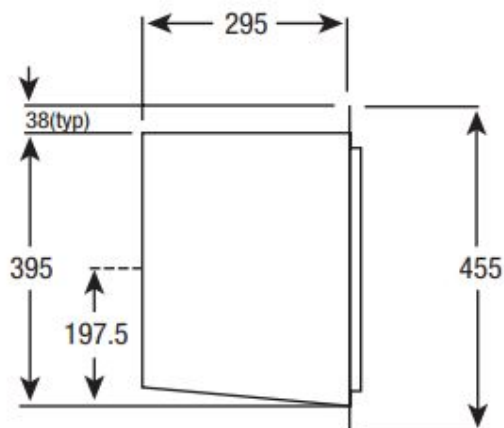
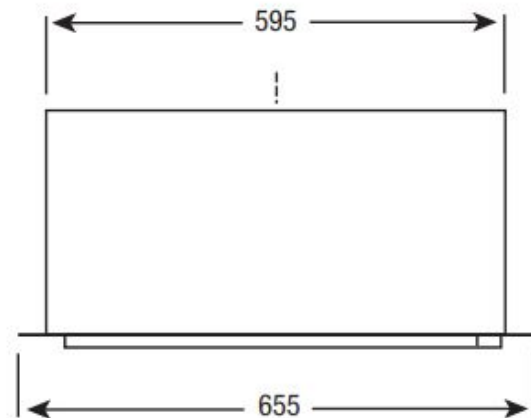


Horizontal Dry Riser Inlet Cabinet

Product Code: 25610102

Construction	Description
Cabinet	1.5mm Zintec, complete with 230mm hole thru' rear. Finished Ral 3000.
Architrave	2mm Zintec, finished Ral 3000.
Door	1.5mm Zintec, finished Ral 3000.
Glass	6mm thick georgian wired cast glass panel, complete with self-adhesive label (white lettering on red background).
Lock	Yale slamlock keydialike.
Hinge	Stainless steel piano hinge/

- To suit structural opening of:- 605mm wide x 405mm high.
- Unit is right hinge only.
- Alternative colour finishes available within BS and RAL ranges (depending on order quantity).

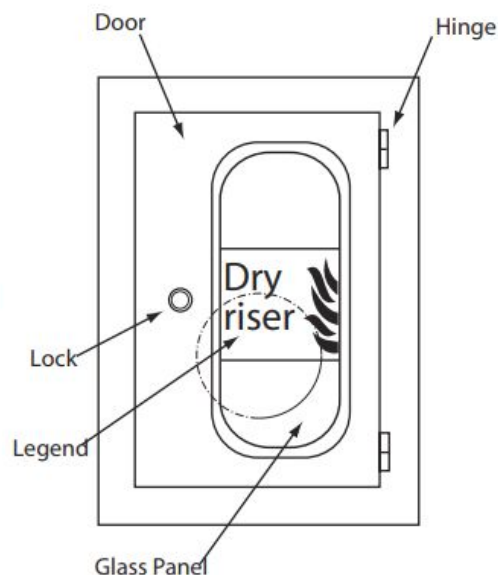
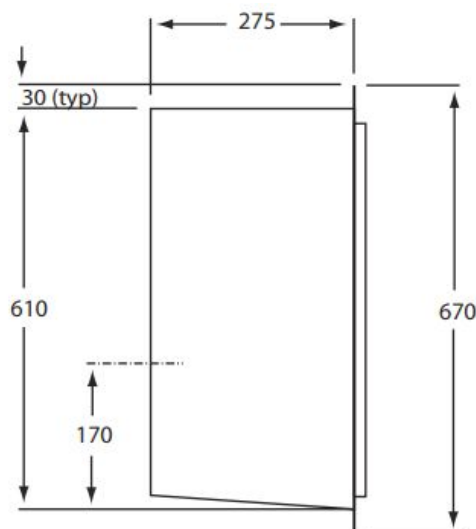
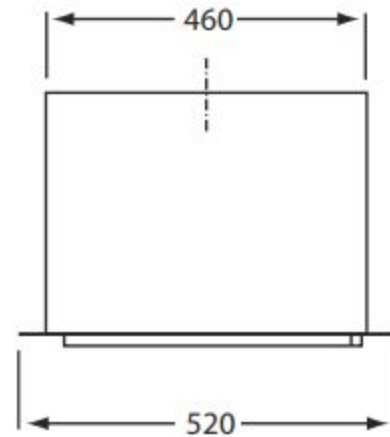


Dry Riser Outlet (Landing Valve) Cabinet For Recess Mounting

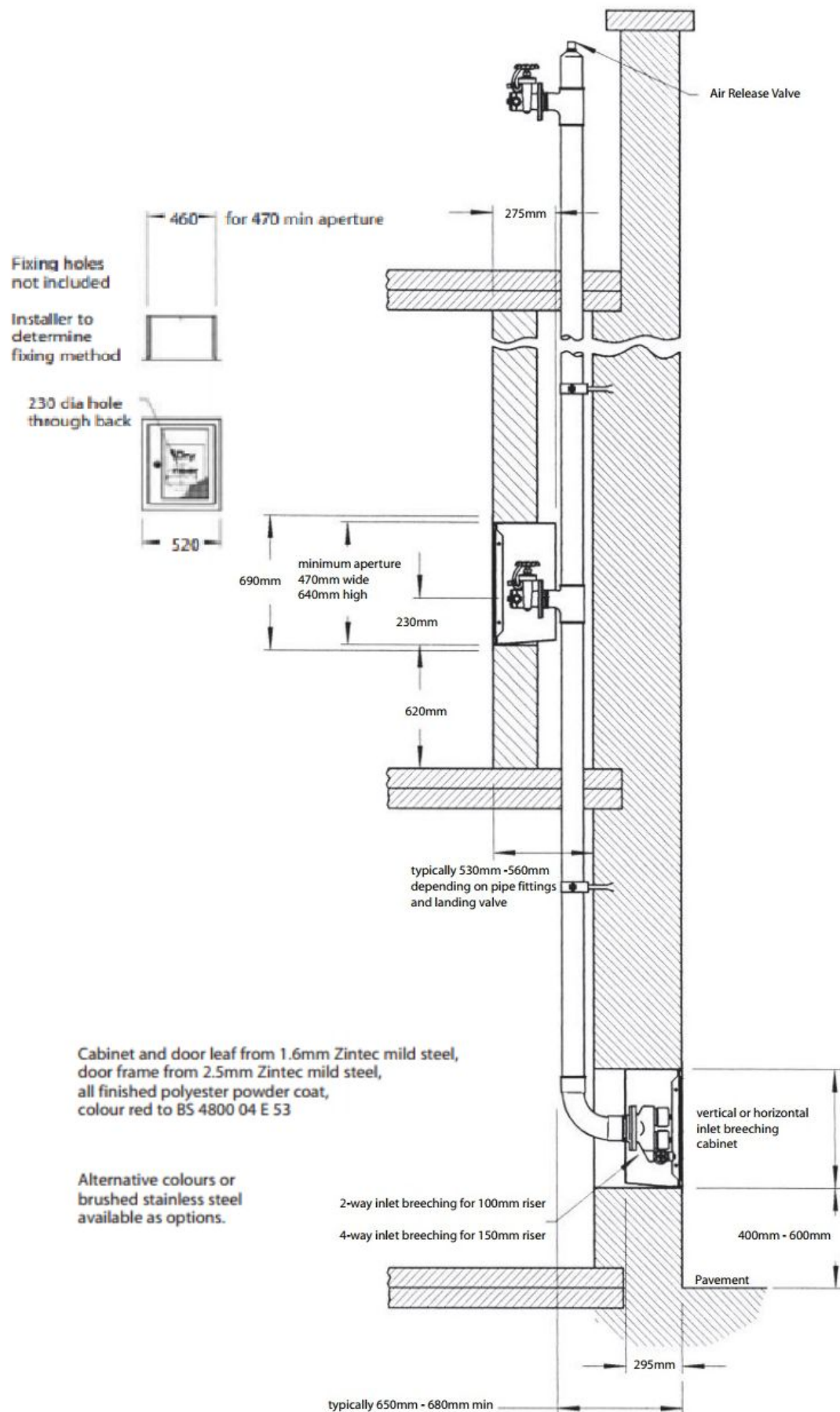
Product Code: 25610050

Construction	Description
Cabinet	1.5mm Zintec, complete with 210mm hole thru' rear. Finished Ral 3000.
Architrave	2mm Zintec, finished Ral 3000.
Door	1.5mm Zintec, finished Ral 3000.
Glass	6mm thick georgian wired cast glass panel, complete with self-adhesive label (white lettering on red background).
Lock	Yale slamlock keydalike.
Hinge	Stainless steel piano hinge/

- To suit structural opening of:- 470mm wide x 620mm high.
- Unit is right hinge only.
- Alternative colour finishes available within the BS and RAL ranges (depending on order quantity).



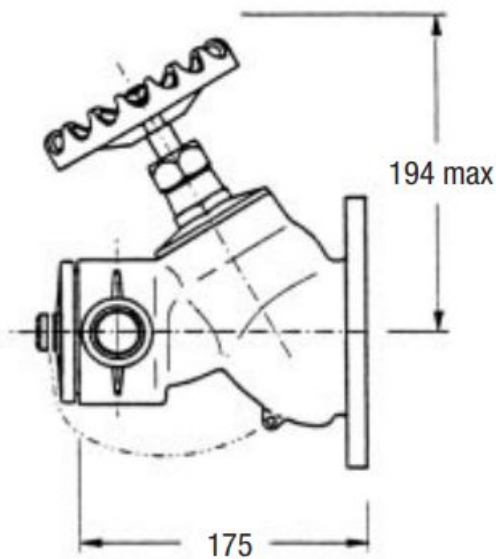
Typical dry riser installation



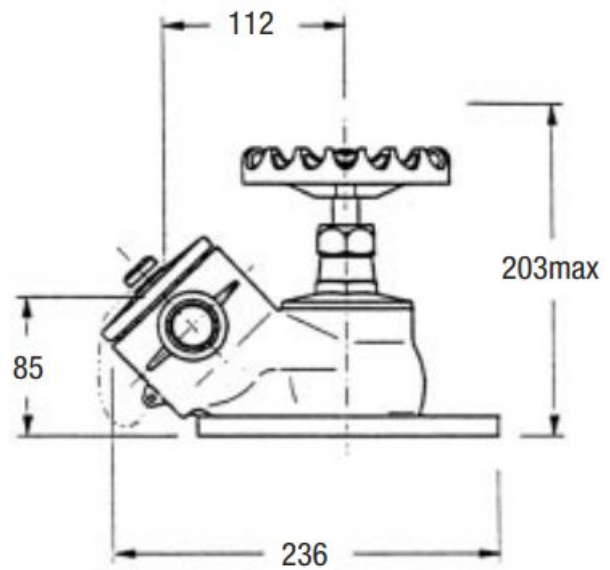
Wet Riser Globe Valves

Description	Size	Product Code
BSTD Oblique	2½"	25610124
BSTD Oblique	3"	25610135
PN16 Oblique	65mm	25610146
BSTD Right Angle	2½"	25610157
BSTD Right Angle	3"	25610168
PN16 Right Angle	65mm	25610179
BSTD Horizontal	2½"	25610190
PN16 Horizontal	65mm	25610220
BSTD Bib Nose	2½"	25610231
BSTD Bib Nose	3"	25610242
PN16 Bib Nose	65mm	25610253

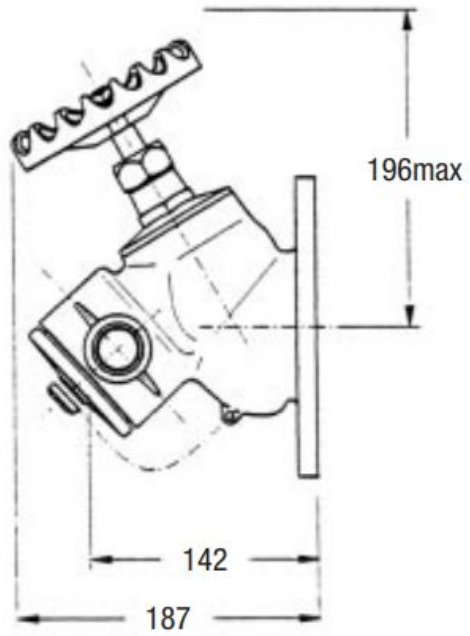
Horizontal pattern



Oblique pattern



Bib-nose pattern



Right-angle pattern

