

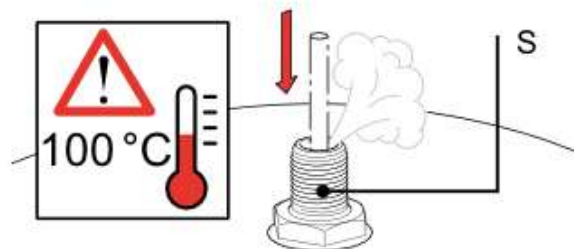
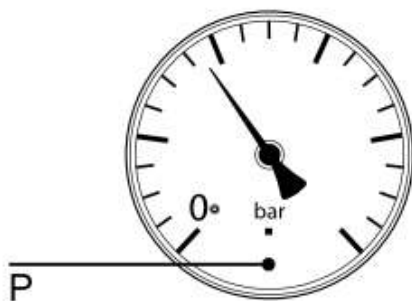
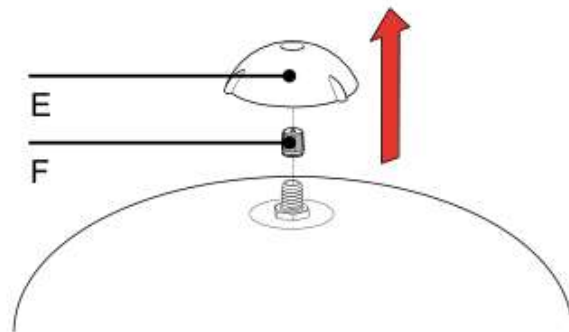
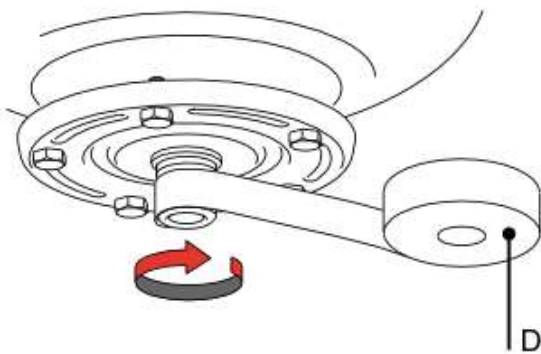
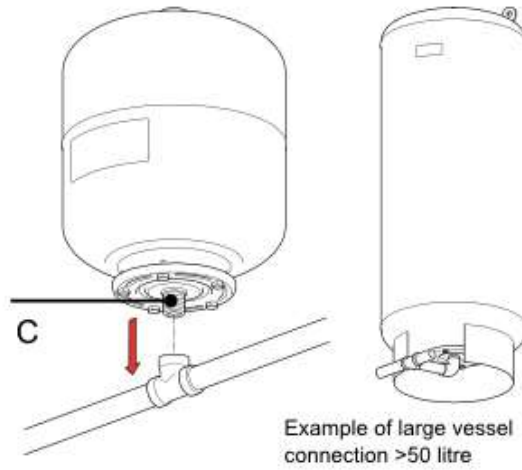
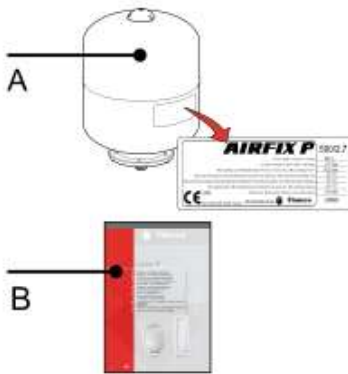


BOSS Potable Expansion Vessel

Installation and Operating Instructions



Potable vessel 2 - 35 Litre



Installation and Operating Instructions

1. General

BOSS Potable diaphragm expansion vessels are compliant with EU Directive 97/23/EG. Certification is available at the manufacturer. Items included are one BOSS Potable (A) as well as an installation-, operating- and maintenance manual (B), a declaration of conformity as well as a drawing. Information on the manufacturer, year of construction and other technical data is displayed on the product label.

Application

BOSS Potable vessels are for use with potable water systems.
BOSS Potable vessels can also be used in pressurization systems (glycol max. 50%).
Min.- / max. system temperature: BOSS Potable 2 - 500: - 10 °C / + 100 °C;
BOSS Potable 750 - 1000: - 10 °C / + 50 °C.



Safety

Install and operate BOSS Potable vessels only if the vessel is free from visible damage. In order to keep within the operating parameters, appropriate safety accessories must be fitted. Disregard of this manual may lead to defects in the vessel, impairment of its function, personal injury or damage to property. To ensure a constant pressure in the mains water supply to the BOSS Potable, a pressure reducing valve must be fitted upstream in the pipeline after the water meter.

2. Installation

The installation must be carried out by approved personnel only. Observe local regulations at all times.

BOSS Potable 2 – 35 litres must be mounted with the water connection pointing downwards (C).
BOSS Potable 50 - 1000 litres vessels are to be installed upright.
Apply (PTFE) synthetic tape (D) to the connection of the BOSS Potable (do not use hemp under any circumstances!).
In case of potable water installations fit the BOSS Potable in the cold water feed pipe.

First use

1. Shut off the water pipe and remove pressure from the water system.
2. Set the pre-charge of the expansion vessel 0,2 bar lower than the set pressure of the pressure reducing valve (please see the vessel label for the factory pre-charge):
 - Remove the cover (E) and the valve cap (F).
 - Measure the pressure (P).
 - If the pressure is too high at the gas top-up valve (S), blow off some gas. If the pressure is too low, top it up, e.g. with a nitrogen canister. Put the valve cap (F) and safety cap (E) in again.
3. Re-open the water pipe.
4. Check the seals on tightness.

3. Maintenance and service

BOSS Potable must be checked annually. Should water escape from the safety valve, proceed as follows:

- Check the outward condition of the vessel for damage or corrosion.
- Check the gas pre-charge and, if necessary, set to the correct pressure as described in point 2: Installation.
- In case the vessel or diaphragm is damaged:
 - Shut off the BOSS Potable from the system.
 - Drain the BOSS Potable.
 - Exchange the vessel or diaphragm.
- Check the gas pre-charge and if necessary set to the required value as described in point 2: Installation.



Caution:

The water in the BOSS Potable may be hot!
Only check the system when the water has cooled off.

4. De-Installation

1. Shut off the water supply and drain the Airfix P on the water side.
2. Remove the cover (E) and the valve cap (F).
3. Remove pressure (P) from the Airfix P at the gas top-up valve (S).
4. Unscrew the Airfix P (A).



Caution: The water in the BOSS Potable may be hot!

Observe the local regulations when you dispose of the expansion vessel.

Notes

This image shows a single sheet of white paper with horizontal ruling lines. The lines are evenly spaced and run across the width of the page. There are no margins, text, or other markings on the paper.



BSS Industrial

Fleet House
Lee Circle
Leicester LE1 3QQ
United Kingdom

T +44 116 256 7052

F +44 116 253 1343

E technicalteam@bssgroup.com

