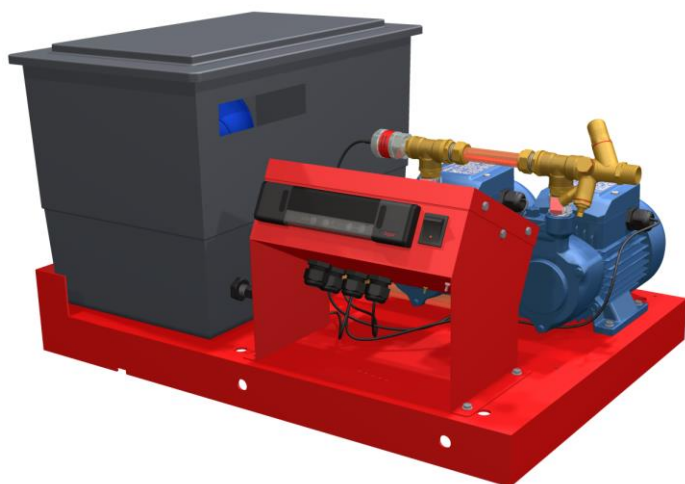


Description:

Compact digital pressurisation unit with electronic pressure transducer and user-friendly microprocessor for use on sealed systems in order to provide a minimum system pressure requirement.



Features

- Floor standing
- Event logging for pump start, individual pump run hours counter, electrical interruption and common alarm
- Volt free contacts for common fault, high pressure, low pressure, pump fault, pressure transducer.
- Password protection for parameter entry
- Pressure settings in 0.1 bar increments
- Service reminder option (12 months).
- Pump pulse option (2 second pulse if inactive for 60 days)
- Flood protection options
- 18 Litre break tank with type AB Air Gap Fluid Cat 5

Application of Use:

- Commercial, industrial, residential (flats)



Twin pump model shown for illustration purposes only

Certifications and Standards Applied:

- PED 97/23/EC Sound Engineering Practice
- IEE - Electrical Safety Guidance
- EMC 2004/108/EC
- BS7074 Parts 1 to 3
- Machine Directive 95/16/EC
- Electronic Components have been tested and comply with the EMC Directives
- EN61000-6-2: Generic Standards – Immunity standard for industrial environments
- EN61000-6-3: Generic Standards – Emission standard for residential, Commercial and light industrial environment
- CE marked components, where applicable
- WRAS approved float valve to BS1212 part 2
- IP54 (BS EN60529) Rated Controller
- IPX5 (BS EN60529) Rated Pump / insulation: Class F

Water Regulations:

- Complies with water regulations 1999 when installed and used correctly.
- Type AB air gap provide protection from Fluid Category 5 backflow protection.
- Calculation of air gap based on Weir airflow
- Complies to EN13077:2008

Maximum Operating Conditions:

- Maximum system temperature 85°C
- Ambient temperature up to 40°C
- Relative humidity 95% non-condensing

Selection Details: As per BS7074 Parts 1 to 3

- Static height of the building above the pressurisation unit (meters)
- Systems content (litres) If unknown provide the boiler power (kW) which can be used to estimate the systems content
- Flow and return temperatures
- Glycol content (%) if required
- Final working pressure

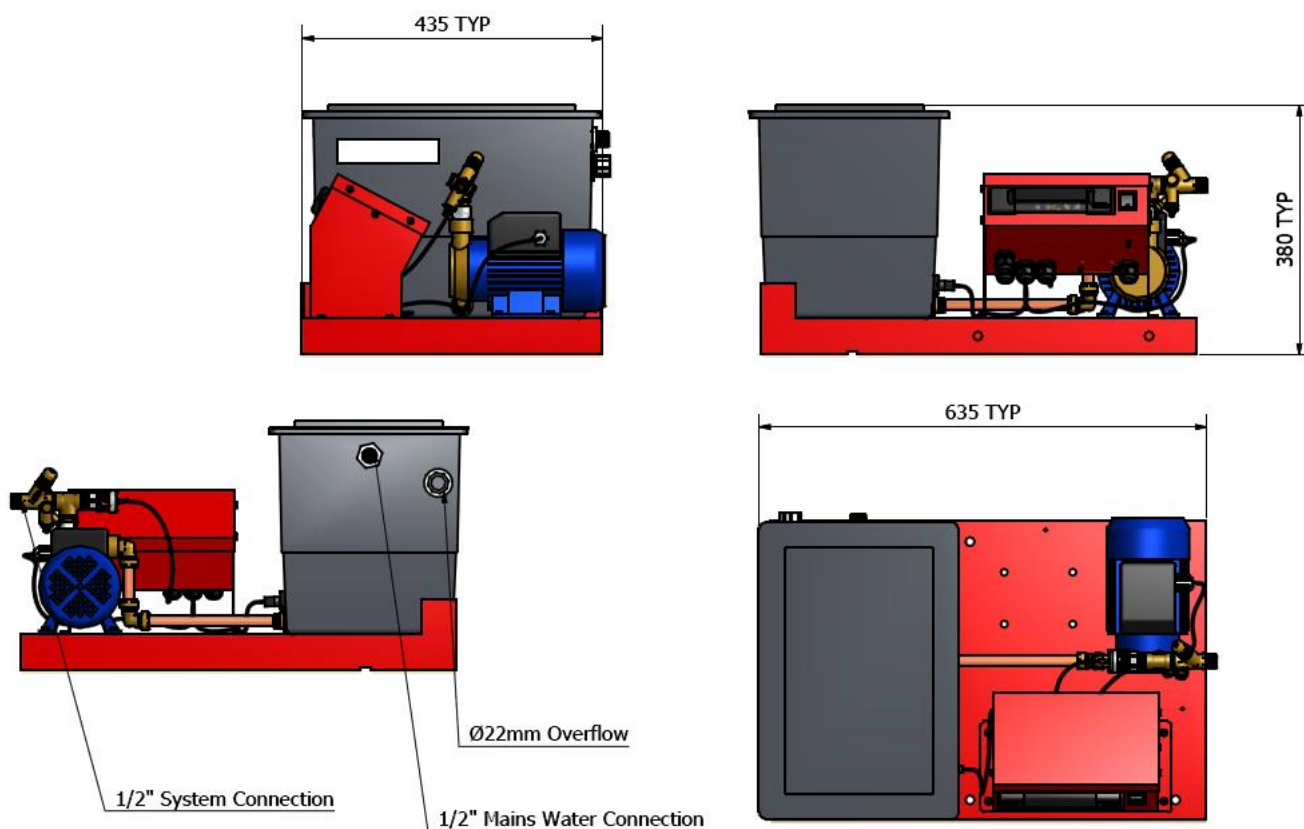
Material of Construction:

- Skid: Mild steel CR4
- Float: WRAS Approved Beta Side Entry
- Break tank: WRAS approved Polypropylene
- Pump: Cast Iron volute & Brass impeller
- Connection: Brass / Polypropylene
- Pipework: Copper
- Colour: Powder Coated – Red (RAL 3002)

Note: Any questions please contact your local representative

Specification:

Product Name	Dimensions (mm)			Connections (mm)			Dry Weight (Kg)	Order Code
	Width	Depth	Height	System	Mains Supply	Drain		
BOSS AX1-2.5E	635	435	380	15 (½")	15 (½")	22	14.5	03510349
BOSS AX1-5E	635	435	380	15 (½")	15 (½")	22	16.5	03510061
BOSS AX2-2.5E	635	435	380	15 (½")	15 (½")	22	19.0	03510060
BOSS AX2-5E	635	435	380	15 (½")	15 (½")	22	23.0	03510072



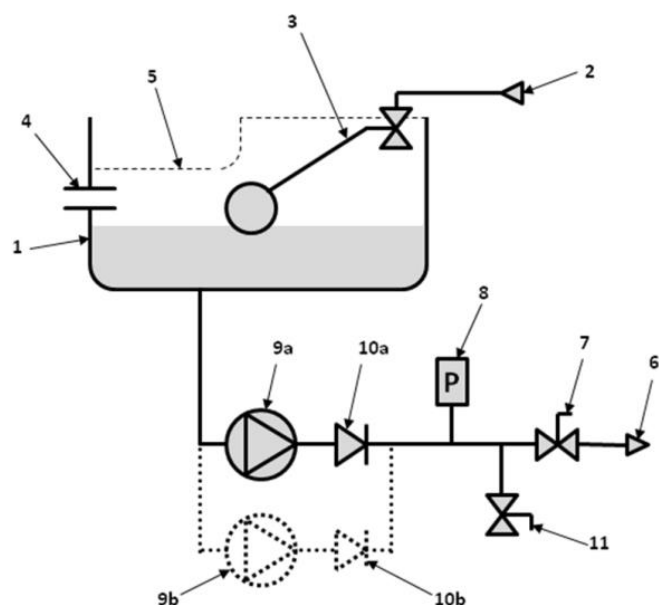
Height clearance required of 445mm

Installation & Placement:

The AX-5E pressurisation unit should be installed in a frost-free and humidity free area. Connected to the system return pipe, at the same point as the expansion vessel to provide a neutral pressure reading where the temperature of fluid does not exceed 70 °C.

Product Name	Required Supply Voltage	Pump Quantity	Maximum Delivery Pressure (Bar)	Power Consumption (kW)	Full Load Current (Amps)	Noise Rating (dBA)	Pressure Rating (Bar)
BOSS AX1-2.5E	230V/1/50Hz	1	2.5	0.37	2.5	<75	PN10
BOSS AX1-5E	230V/1/50Hz	1	5	0.5	3.4	<75	PN10
BOSS AX2-2.5E	230V/1/50Hz	2	2.5	2x 0.37	2 x 2.5	<75	PN10
BOSS AX2-5E	230V/1/50Hz	2	5	2 x 0.50	2 x 3.4	<75	PN10

Schematic layout:



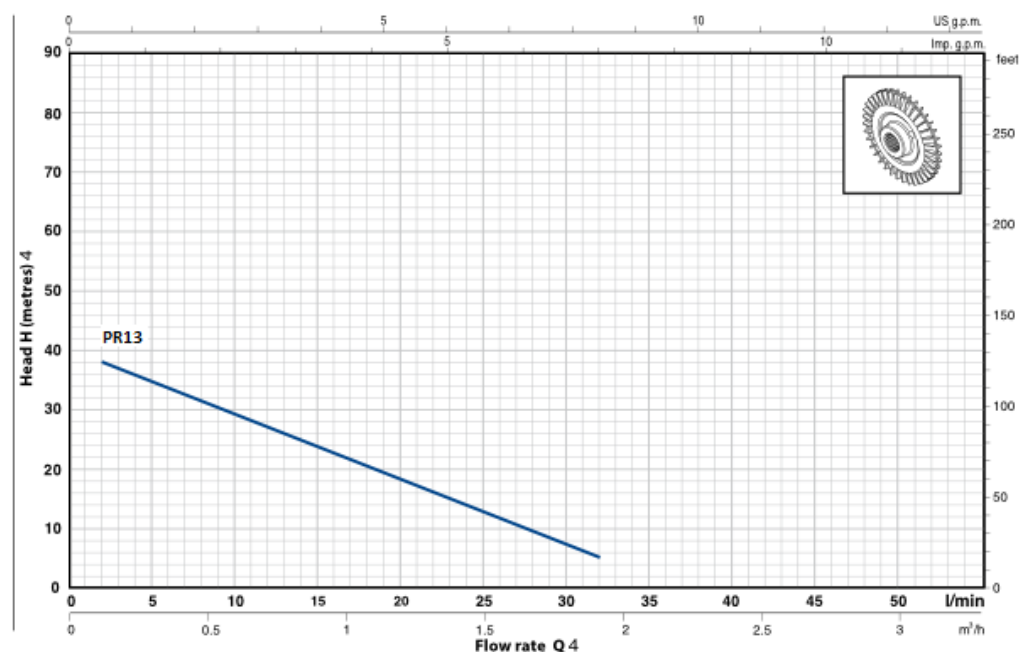
KEY

- 1 Break Tank
- 2 Mains Water Inlet
- 3 Float Operated Valve
- 4 Overflow Connection
- 5 AB Air Gap Backflow Protection
- 6 Supply To Sealed System
- 7 Isolation Valve
- 8 Pressure Transmitter
- 9a / 9b Pump(s)
- 10a / 10b Non Return Valve
- 11 Drain Valve

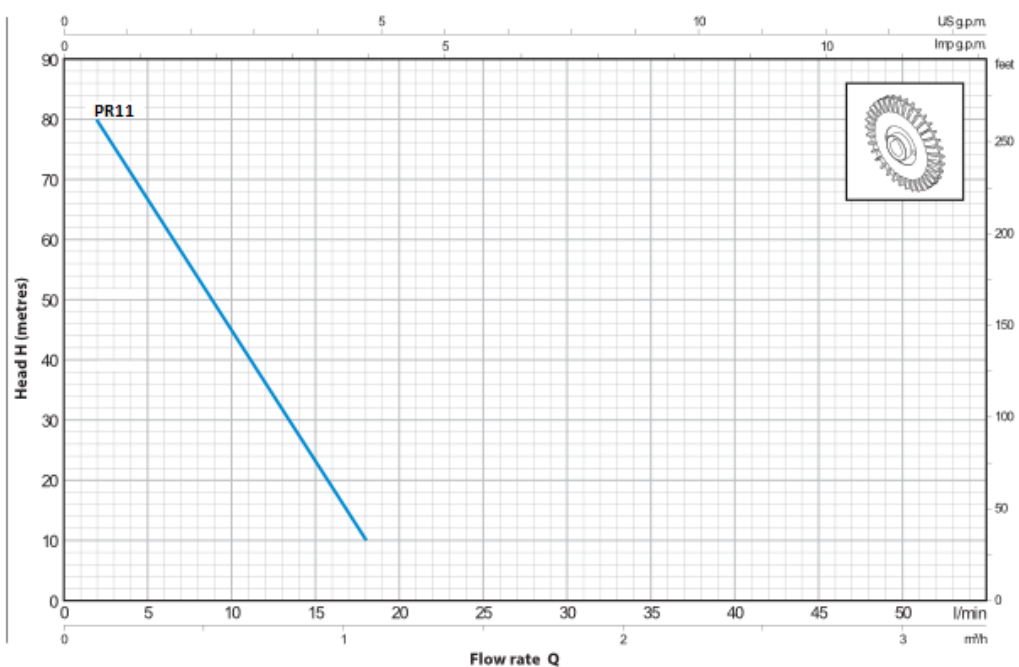
Pump Curve:

CHARACTERISTIC CURVES AND PERFORMANCE DATA

50 Hz n= 2900 1/min HS= 0 m



TYPE	PUMP USED
BOSS AX1-2.5E	PR13
BOSS AX2-2.5E	PR13



TYPE	PUMP USED
BOSS AX1-5E	PR11
BOSS AX2-5E	PR11

Disclaimer: We reserve the right to change designs and technical specification of our products