

### Description:

Compact, wall mounted, totally enclosed pre-set digital pressurisation unit with electronic pressure transducer, user-friendly microprocessor for use on sealed systems in order to provide a minimum system pressure requirement. Suitable for system filling and automatic top-up.



### Features:

- Factory commissioned
- Self-bleeding pump
- Wall Mounted
- System quick-fill mode
- Password protection for parameter entry
- Pressure settings in 0.1 bar increments
- Service reminder option (12 months).
- Pump pulse option (2 second pulse if inactive for 60 days)
- Flood protection options
- High Flow applications (12.0 l/min)
- Event logging for pump start, individual pump run hour's counter, electrical interruption and common alarm.
- Volt free contacts for common fault, high pressure, low pressure, pump fault, pressure transducer fault.
- 4 Litre break tank with type AB Air Gap Fluid Cat 5
- Suitable for heating systems utilising up to 2 x 1000L vessels and chilled water systems up to and including a 300L vessel

### Application of Use:

- Commercial, industrial, residential (flats)

**System Volume (Guide): < 60000 Litres**

### Maximum Operating Conditions:

- Maximum system temperature 85°C
- Ambient temperature up to 40°C
- Relative humidity 95% non-condensing

### Certifications and Standards Applied:

- PED 97/23/EC Sound Engineering Practice
- IEE - Electrical Safety Guidance
- EMC 2004/108/EC
- BS7074 Parts 1 to 3
- Machine Directive 95/16/EC
- Electronic Components have been tested and comply with the EMC Directives
- EN61000-6-2: Generic Standards – Immunity standard for industrial environments
- EN61000-6-3: Generic Standards – Emission standard for residential, Commercial and light industrial environment
- CE marked components, where applicable
- WRAS approved float valve to BS1212 part 3
- IP54 (BS EN60529) Rated Controller
- IPX2 (BS EN60529) Rated Pump

### Selection Details: As per BS7074 Parts 1 to 3

- Static Height of the building above the pressurisation unit (meter)
- Systems content (litres) If unknown provide the boiler power (Kw) which can be used to estimate the systems content
- Flow and return temperatures
- Glycol content (%) if required
- Final working pressure

### Water Regulations:

- Complies with water regulations when installed and used correctly.
- Type AB air gap Fluid Category 5 backflow protection.
- Calculation of air gap based on Weir airflow
- Complies to EN13077:2008

### Material of Construction:

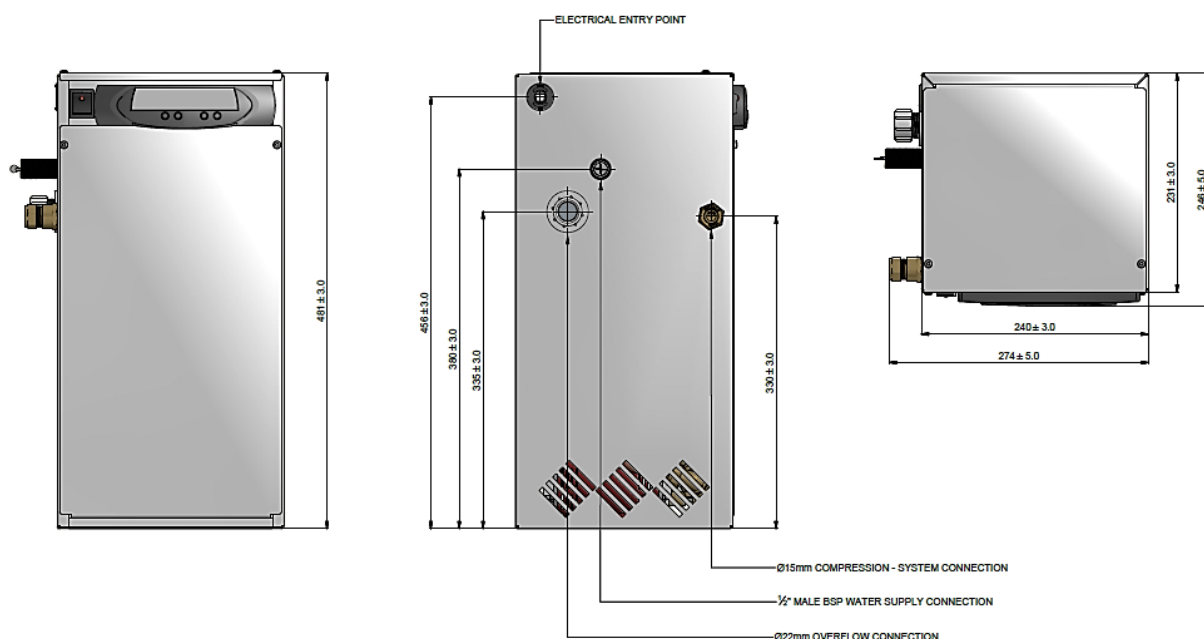
- Cabinet: Mild steel CR4
- Float: WRAS Approved Torbeck Side Entry
- Break Tank: Stainless Steel 304
- Pump: Cast Iron volute & Brass impeller
- Connection: Brass / Polypropylene
- Pipework: Braided flexihose / EPDM
- Colour: Powder Coated – White (RAL 9910)

**Note: Any questions please contact your local representative**

### Specification:

Product Name	Dimensions (mm)			Connections (mm)			Dry Weight (Kg)
	Width	Depth	Height	System	Mains Supply	Overflow	
Digifiller Range	240	230	480	15 (1/2")	15 (1/2")	22	17.0

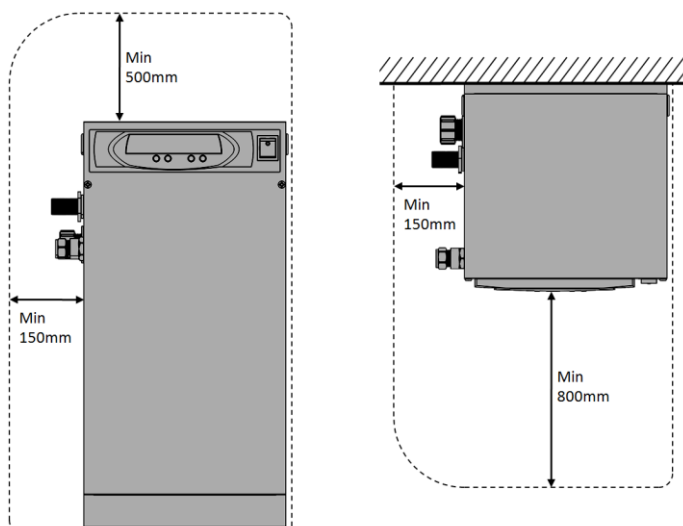
Product Name	Preset Settings			Order Code
	Cold Fill	Low Alarm	High Alarm	
BOSS Digifiller 1.0	1	0.5	2.7	18300022
BOSS Digifiller 1.5	1.5	1	2.7	18300033
BOSS Digifiller 2.0	2	1.5	3.7	18300044



### Installation & Placement:

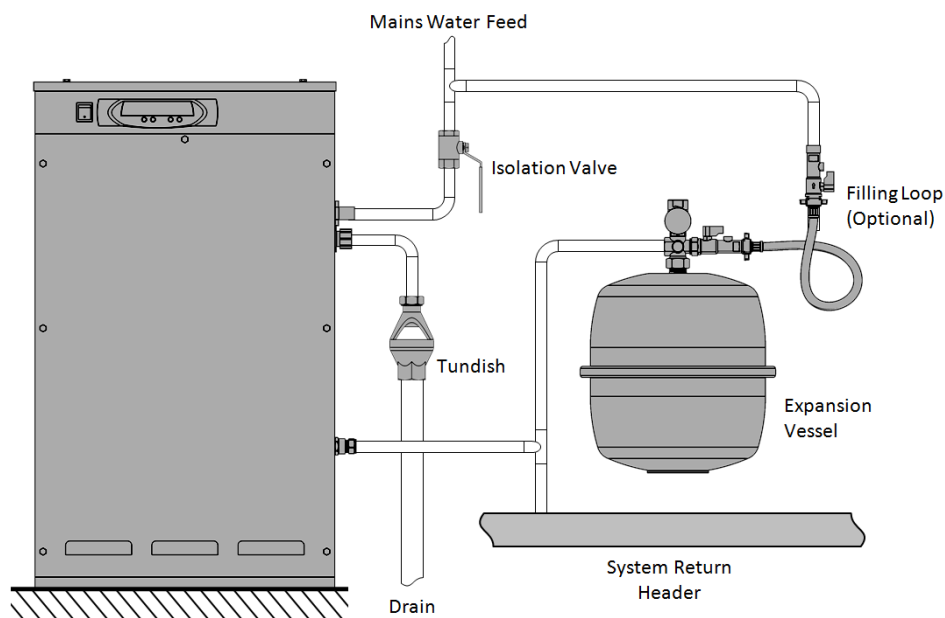
The BOSS Digifiller pressurisation unit should be installed in a frost-free and humidity free area. Connected to the system return pipe, at the same point as the expansion vessel to provide a neutral pressure reading.

### Clearance and connection requirements:

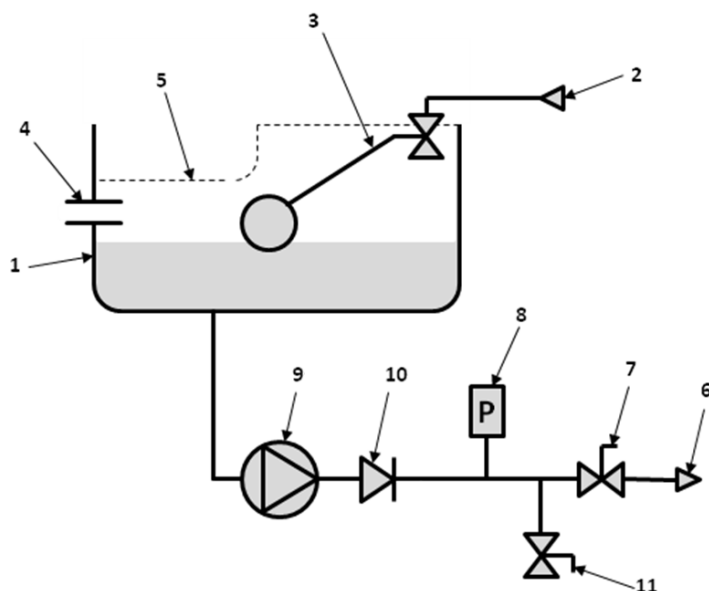


Product Name	Required Supply Voltage	Pump Quantity	Maximum Delivery Pressure (bar)	Power Consumption (KW)	Full Load Current (amps)	Noise Rating (dBA)	Pressure Rating (bar)
Digifiller Range	230V 1 Phase 50 Hz	1	2.5	0.37	2.6	<75	PN10

**Typical Installation Diagram:** (Image for illustration purposes only) (Example: floor standing model)



**Schematic layout:**

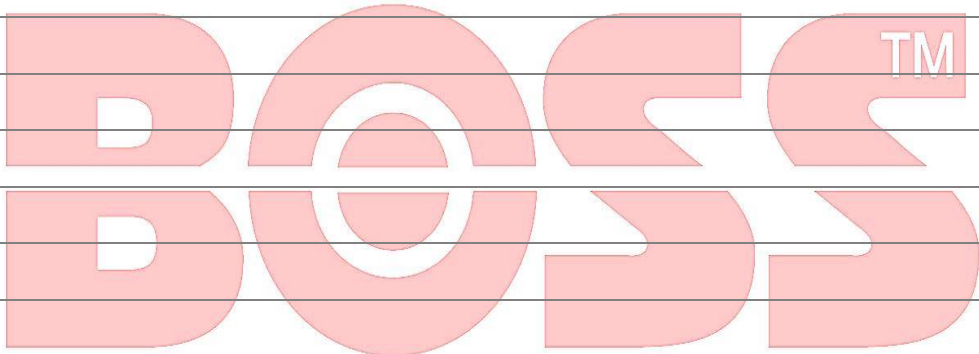


### KEY

- 1 Break Tank
- 2 Mains Water Inlet
- 3 Float Operated Valve
- 4 Overflow Connection
- 5 AB Air Gap Backflow Protection
- 6 Supply To Sealed System
- 7 Isolation Valve
- 8 Pressure Transmitter
- 9 Pump
- 10 Non Return Valve
- 11 Drain Valve

Product Name	Pump Used
Digifiller Range	Watermill Flamco-003

## Notes

The logo for DOSS is displayed in a large, bold, red font. The letters are stylized with a slight shadow effect. A small "TM" trademark symbol is located to the upper right of the "S" in "DOSS".

**Disclaimer:** We reserve the right to change designs and technical specification of our products