

Description:

Compact, wall mounted, totally enclosed digital pressurisation unit with electronic pressure transducer and user-friendly microprocessor for use on sealed systems in order to provide a minimum systems pressure requirement



Features:

- Wall Mounted
- System quick-fill mode
- Password protection for parameter entry
- Pressure settings in 0.1 bar increments
- Service reminder option (12 months).
- Pump pulse option (2 second pulse if inactive for 60 days)
- Flood protection options
- High Flow applications (12.0 l/min)
- Event logging for pump start, individual pump run hour's counter, electrical interruption and common alarm.
- Volt free contacts for common fault, high pressure, low pressure, pump fault, pressure transducer fault.
- 4 Litre break tank with type AB Air Gap Fluid Cat 5

Application of Use:

- Commercial, industrial, residential (flats)

System Volume (Guide): < 8000 Litres

Certifications and Standards Applied:

- PED 2014/68/EU Sound Engineering Practice
- IEE - Electrical Safety Guidance
- EMC 2004/108/EC
- BS7074 Parts 1 to 3
- Machine Directive 95/16/EC
- Electronic Components have been tested and comply with the EMC Directives
- EN61000-6-2: Generic Standards – Immunity standard for industrial environments
- EN61000-6-3: Generic Standards – Emission standard for residential, Commercial and light industrial environment
- CE marked components, where applicable
- WRAS approved float valve to BS1212 part 3
- IP54 (BS EN60529) Rated Controller
- IPX5 (BS EN60529) Rated Pump

Maximum Operating Conditions:

- Maximum system temperature 85°C
- Ambient temperature up to 40°C
- Relative humidity 95% non-condensing

Selection Details: As per BS7074 Parts 1 to 3

- Static Height of the building above the pressurisation unit (meter)
- Systems content (litres) If unknown provide the boiler power (Kw) which can be used to estimate the systems content
- Flow and return temperatures
- Glycol content (%) if required
- Final working pressure

Water Regulations:

- Complies with water regulations when installed and used correctly.
- Type AB air gap provide protection from Fluid Category 5 backflow protection.
- Calculation of air gap based on Weir airflow
- Complies to EN13077:2008

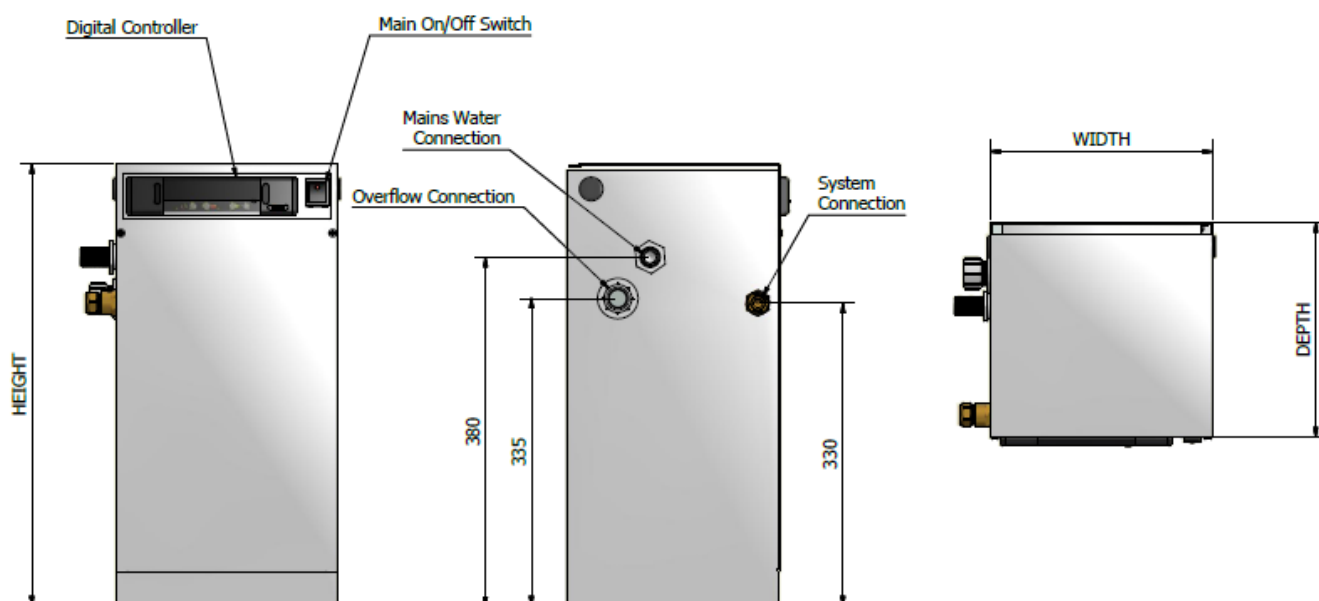
Material of Construction:

- Cabinet: Mild steel CR4
- Float: Thomas Dudley Valve
- Break Tank: Polypropylene
- Pump: Brass volute & Brass impeller
- Connection: Brass / Polypropylene
- Pipework: Braided flexihose / EPDM
- Colour: Powder Coated – White (RAL 9910)

Note: Any questions please contact your local representative

Specification:

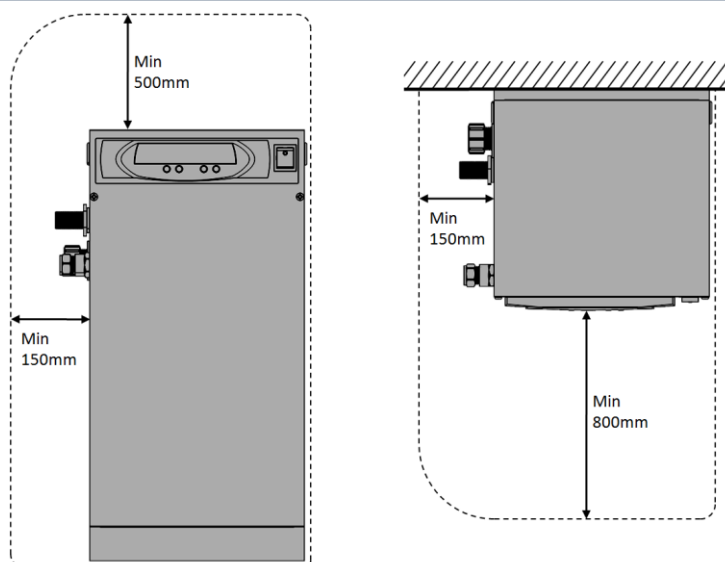
Product Name	Dimensions (mm)			Connections (mm)			Dry Weight (Kg)	Order Code
	Width	Depth	Height	System	Mains Supply	Overflow		
BOSS MD1-2.5E	240	230	480	15 (1/2")	15 (1/2")	22	17	03510135
BOSS MD2-2.5E	360	260	485	15 (1/2")	15 (1/2")	22	25.5	03510146
BOSS MD1-5.0E	360	260	485	15 (1/2")	15 (1/2")	22	32.5	03510157
BOSS MD2-5.0E	360	260	485	15 (1/2")	15 (1/2")	22	42	03510168



Installation & Placement:

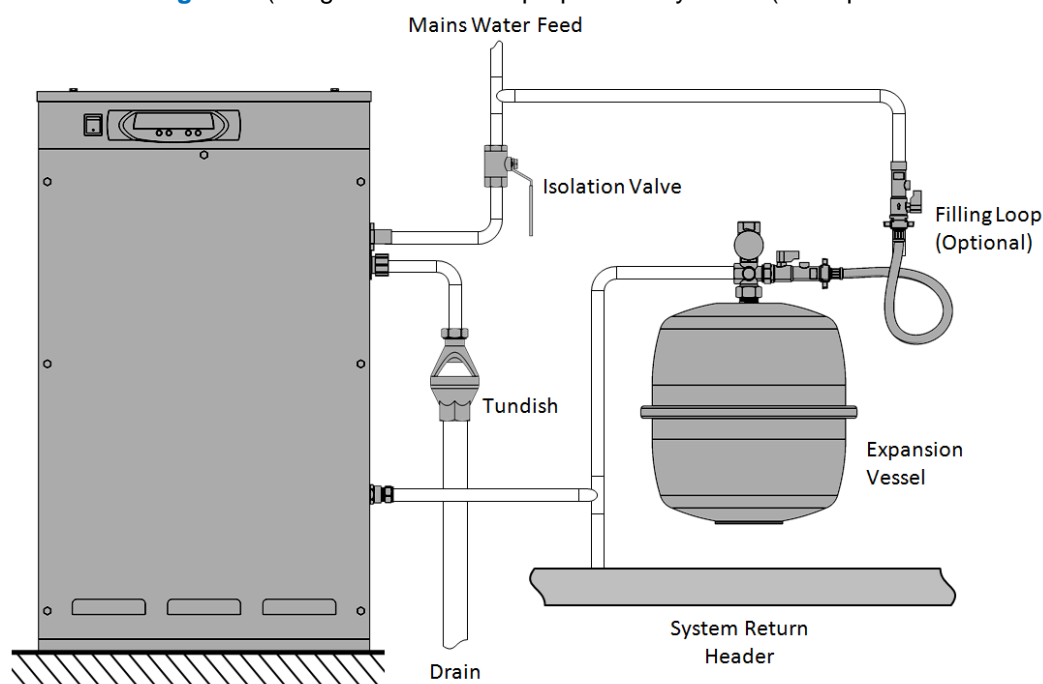
The MD pressurisation unit should be installed in a frost-free and humidity free area. Connected to the system return pipe, at the same point as the expansion vessel to provide a neutral pressure reading where the temperature of fluid does not exceed 70° C.

Clearance and connection requirements:

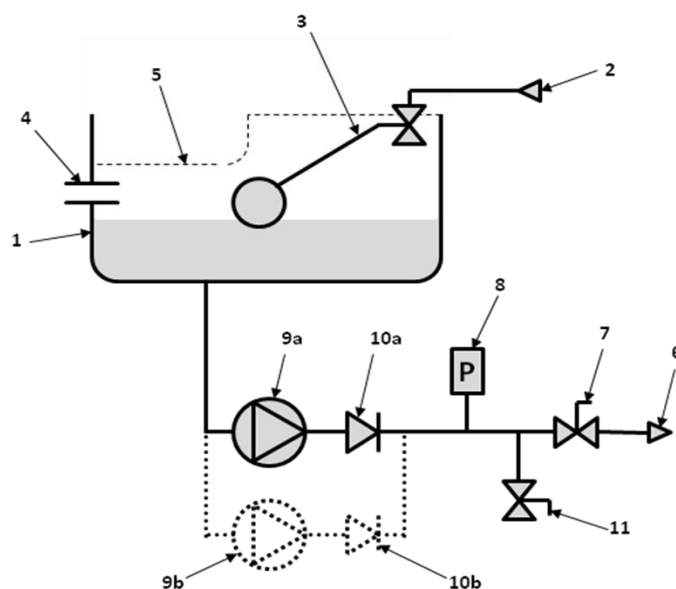


Product Name	Required Supply Voltage	Pump Quantity	Maximum Delivery Pressure (bar)	Power Consumption (KW)	Full Load Current (amps)	Noise Rating (dBA)	Pressure Rating (bar)
BOSS MD1-2.5E	230V/1/50Hz	1	2.5	0.37	2.6	<75	PN10
BOSS MD2-2.5E	230V/1/50Hz	2	2.5	2 x 0.37	2 x 2.6	<75	PN10
BOSS MD1-5.0E	230V/1/50Hz	1	5	0.5	3.4	<75	PN10
BOSS MD2-5.0E	230V/1/50Hz	2	5	2 x 0.5	2 x 3.4	<75	PN10

Typical Installation Diagram: (Image for illustration purposes only) (Example: floor standing model)



Schematic layout:



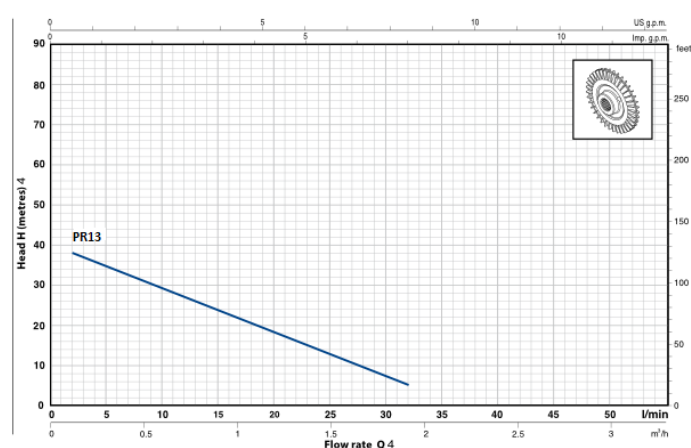
KEY

- 1 Break Tank
- 2 Mains Water Inlet
- 3 Float Operated Valve
- 4 Overflow Connection
- 5 AB Air Gap Backflow Protection
- 6 Supply To Sealed System
- 7 Isolation Valve
- 8 Pressure Transmitter
- 9a / 9b Pump(s)
- 10a / 10b Non Return Valve
- 11 Drain Valve

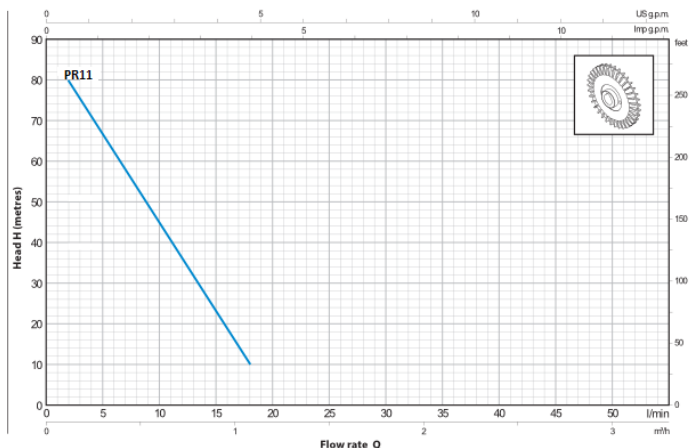
Pump curve:

CHARACTERISTIC CURVES AND PERFORMANCE DATA

50 Hz n=2900 1/min HS=0 m

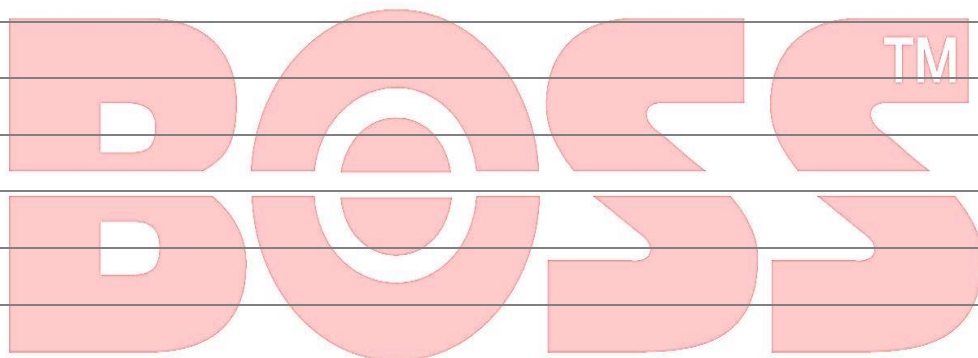


Type	Pump Used
BOSS MD1-2.5E	PR13
BOSS MD2-2.5E	PR13



Type	Pump Used
BOSS MD1-5.0E	PR11
BOSS MD2-5.0E	PR11

Notes



Disclaimer: We reserve the right to change designs and technical specification of our products