

### Description:

The PressDS topup pressurisation equipment is selected to maintain the minimum water pressure of sealed chilled and heating systems, while adding treated fluid in the appropriate concentration for the system. The PressDS equipment utilises a multifunction digital controller with a simple user interface.

PressDS equipment is an advanced product that combines a pressure monitoring system with a water 'air break' tank to preserve the integrity of the mains water supply and an internal chemical additive tank for water treatment.

The real-time display shows the status of the equipment while monitoring the system pressure and the health of its own components.



### Features:

- System quick-fill mode
- Password protection for parameter entry
- Pressure settings in 0.1 bar increments
- Service reminder option (12 months).
- Pump pulse option (2 second pulse if inactive for 60 days)
- Flood protection options
- Event logging for pump start, individual pump run hour's counter, electrical interruption and common alarm.
- Volt free contacts for common fault, high pressure, low pressure, pump fault, pressure transducer fault.
- 4 Litre water break tank with type AB Air Gap Fluid Cat 5
- 18 litre additive tank
- Mix ratios from 1% to 50% user configurable balancing valves
- Top-up pressurisation unit (<18.0 l/min)

### Application of Use:

- Commercial, industrial, residential (flats)

**System Volume (Guide): < 60000 Litre**

### Certifications and Standards Applied:

- PED 97/23/EC Sound Engineering Practice
- IEE - Electrical Safety Guidance
- EMC 2004/108/EC
- BS7074 Parts 1 to 3
- Machine Directive 95/16/EC
- Electronic Components have been tested and comply with the EMC Directives
- EN61000-6-2: Generic Standards – Immunity standard for industrial environments
- EN61000-6-3: Generic Standards – Emission standard for residential, Commercial and light industrial environment
- CE marked components, where applicable
- WRAS approved float valve to BS1212 part 2
- IP54 (BS EN60529) Rated Controller

### Water Regulations:

- Complies with water regulations 1999 when installed and used correctly.
- Type AB air gap Fluid Category 5 backflow protection.
- Calculation of air gap based on Weir airflow
- Complies to EN13077:2008

### Maximum Operating Conditions:

- Maximum system temperature 85°C
- Ambient temperature up to 40°C
- Relative humidity 95% non-condensing

### Selection Details: As per BS7074 Parts 1 to 3

- Static height of the building above the pressurisation unit (meters)
- Systems content (litres) If unknown provide the boiler power (kW) which can be used to estimate the systems content
- Flow and return temperatures
- Additive content (%)
- Max working pressure

### Material of Construction:

- Cabinet: Mild steel CR4
- Float: WRAS approved Beta Side entry
- Break tank: Stainless steel 304
- Additive tank: Polypropylene
- Pump: See Pump Curve
- Pump: WRAS approved
- Connection: Brass / Polypropylene / rubber
- Pipework: Braided flexihose
- Colour: Powder Coated – Black (RAL 9005)

**Note: Any questions please contact your local representative**

### Specification:

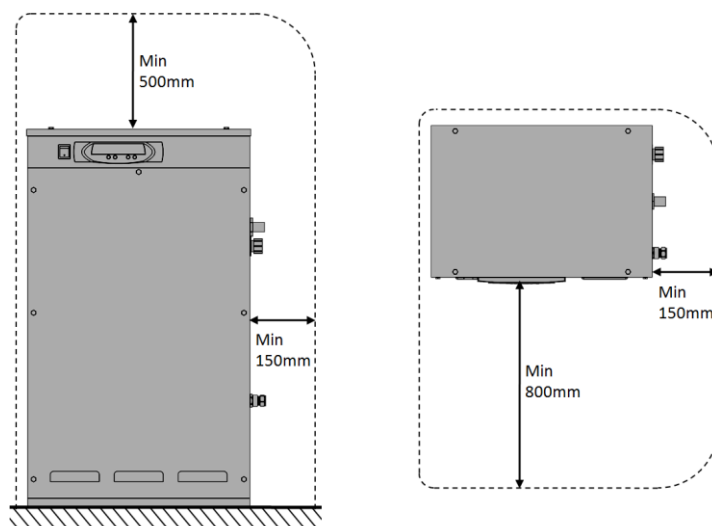
Product Name	Dimensions (mm)			Connections (mm)			Dry Weight (Kg)	Order Code
	Width	Depth	Height	System	Mains Supply	Overflow		
BOSS PFI 2-2.5	470	320	1160	15 (1/2")	15 (1/2")	22	42.5	03510401
BOSS PFI 2-5	470	320	1160	15 (1/2")	15 (1/2")	22	44.5	03510412
BOSS PFI 2-8	470	320	1160	15 (1/2")	15 (1/2")	22	47.5	03510423



### Installation & Placement:

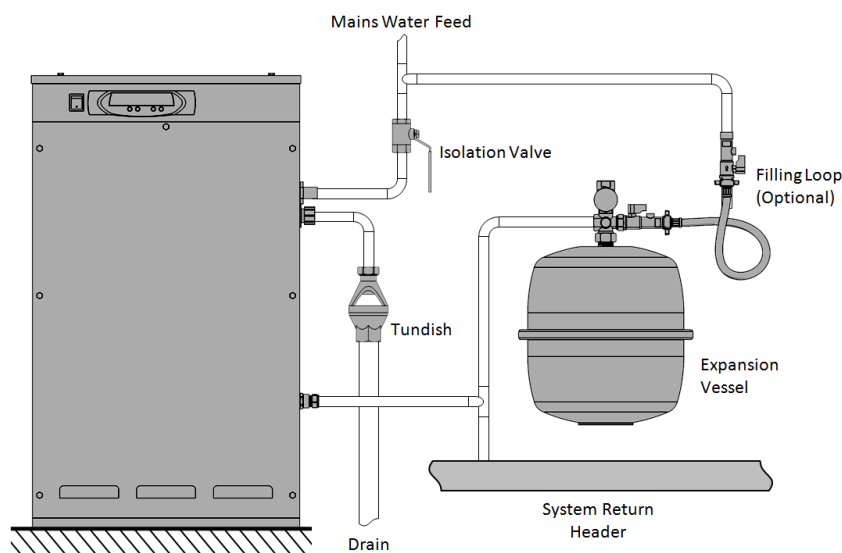
The BOSS PFI unit should be installed in a frost-free and humidity free area. Connected to the system return pipe, at the same point as the expansion vessel to provide a neutral pressure reading where the temperature of fluid does not exceed 70°C.

### Clearance and connection requirements:

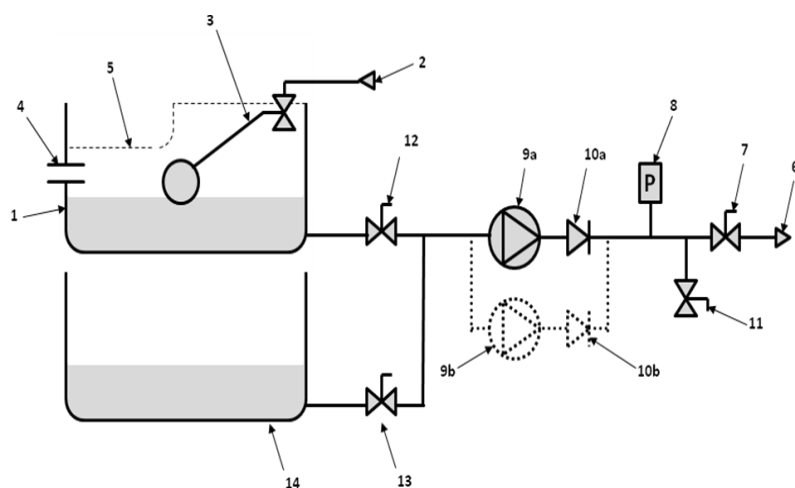


Product Name	Required Supply Voltage	Pump Quantity	Maximum Delivery Pressure (bar)	Power Consumption (kW)	Full Load Current (Amps)	Noise Rating (dBA)	Pressure Rating (bar)
BOSS PFI 2-2.5	230V/1/50Hz	2	2.5	0.37	2.6	<75	PN10
BOSS PFI 2-5	230V/1/50Hz	2	5	0.5	3.4	<75	PN10
BOSS PFI 2-8	230V/1/50Hz	2	8	0.75	5.6	<75	PN10

**Typical Installation Diagram:** (Image for illustration purposes only) (Example: floor standing model)



**Schematic layout:**



### Key

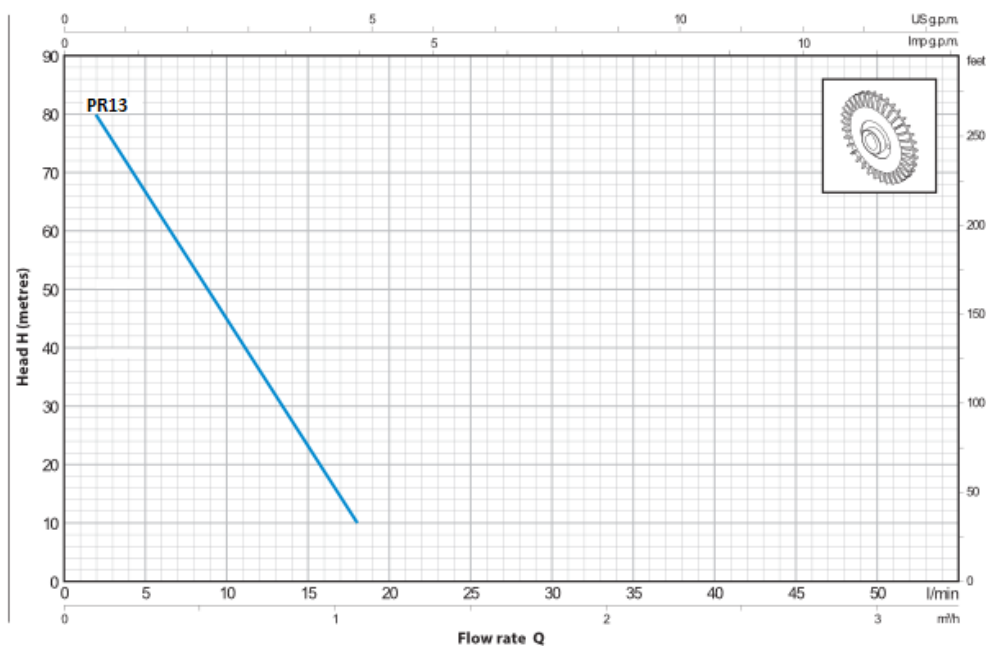
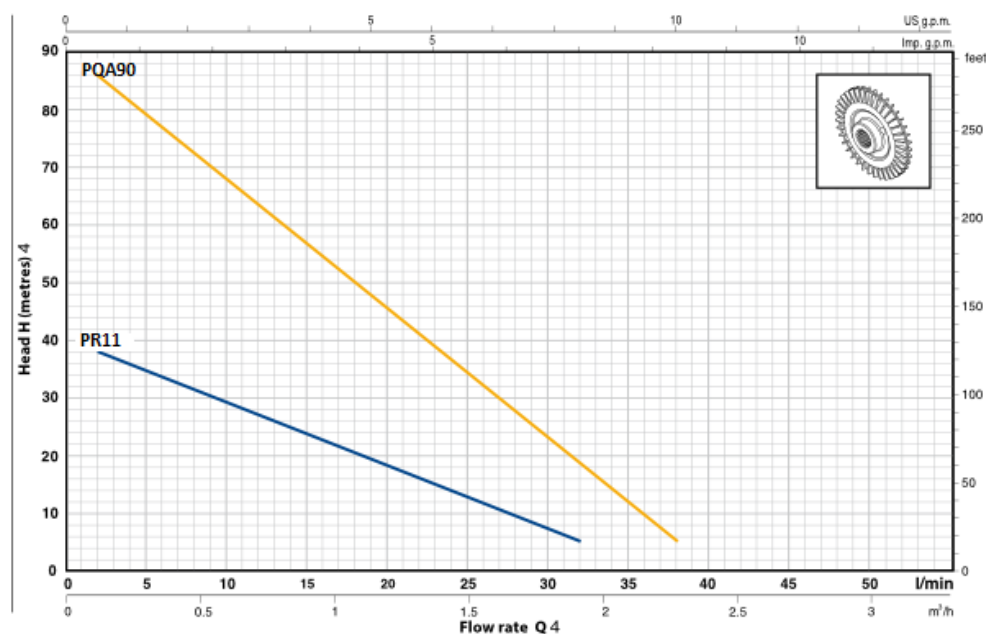
- 1 Break Tank
- 2 Mains Water Inlet
- 3 Float Operated Valve
- 4 Overflow Connection
- 5 AB Air Gap Backflow Protection
- 6 Supply To Sealed System
- 7 Isolation Valve
- 8 Pressure Transmitter
- 9a / 9b Pump(s)
- 10a / 10b Non Return Valve
- 11 Drain Valve
- 12 Water Balancing Valve
- 13 Glycol Balancing Valve
- 14 Glycol Tank

### Pump curve:

Pump Details						
Model Type	Pump Qty	Pump Type	Pump Body	Impeller	Insulation Class	IP Rating
PBOSS PFI 2-2.5	2	PR13	Ryton	Brass	F	IPX4
BOSS PFI 2-5	2	PR11	Brass	Brass	F	IPX4
BOSS PFI 2-8	2	PEDROLLO PQA90	Ryton	Brass	F	IPX4

CHARACTERISTIC CURVES AND PERFORMANCE DATA

50 Hz n= 2900 1/min HS= 0 m



**Disclaimer:** We reserve the right to change designs and technical specification of our products