

Description:

Compact, totally enclosed wall mounted vacuum degasser for use on sealed systems in order to provide effective dissolved gas removal.



shown for illustration purposes only

Features

- System quick-fill mode
- Password protection for parameter entry
- Pressure settings in 0.1 bar increments
- Service reminder option (12 months).
- Pump pulse option (2 second pulse if inactive for 60 days)
- Flood protection options
- Event logging for pump start, pump run hours counter, electrical interruption and common alarm.
- Volt free contacts for common fault pump fault, pressure transducer.
- Vacuum degassing, turbo and normal interval modes

Application of Use:

- Commercial, industrial, residential (flats)



Certifications and Standards Applied:

- PED 97/23/EC Sound Engineering Practice
- IEE - Electrical Safety Guidance
- EMC 2004/108/EC
- BS7074 Parts 1 to 3
- Machine Directive 95/16/EC
- Electronic Components have been tested and comply with the EMC Directives
- EN61000-6-2: Generic Standards – Immunity standard for industrial environments
- EN61000-6-3: Generic Standards – Emission standard for residential, Commercial and light industrial environment
- CE marked components, where applicable
- IP54 (BS EN60529) Rated Controller
- IPX4 (BS EN60529) Rated Pump / insulation: Class F

Maximum Operating Conditions:

- Maximum system temperature 85°C
- Ambient temperature up to 40°C
- Relative humidity 95% non-condensing

Material of Construction:

- Cabinet: Mild steel CR4
- Pump: Brass volute & Brass impeller (PR13)
- Pump: Ryton volute & Brass impeller (PQA90)
- Pump: WRAS Approved
- Cylinder: Stainless steel 304
- Valves: Brass
- Connection: Brass / Polypropylene
- Pipework: Braided flexihose
- Colour: Powder Coated – Blue (RAL 5007)

Note: Any questions please contact your local representative

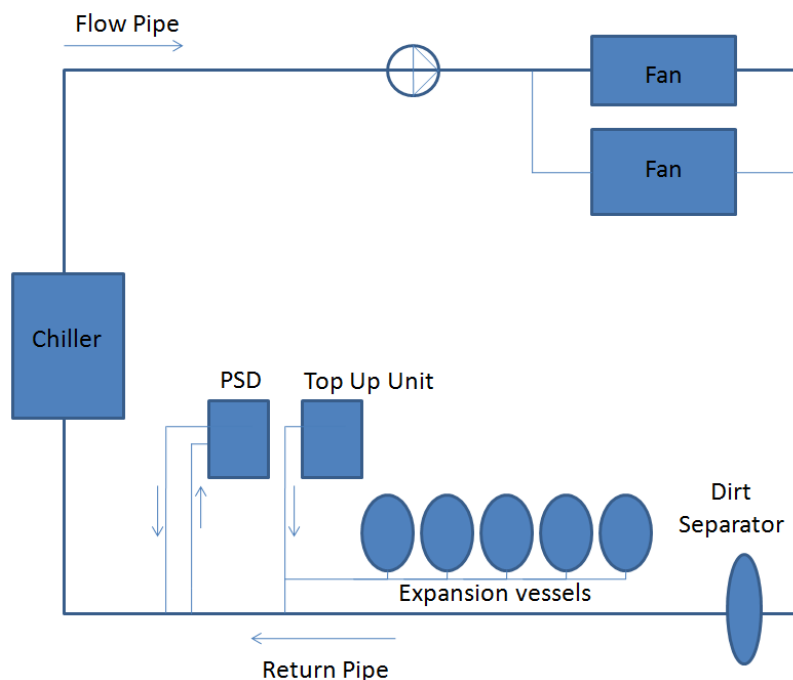
Specification:

Description	Dimensions (mm)			Connections	Weight (Kg)	Order Code
	Width	Depth	Height			
BOSS Midi PSD	410	280	480	1/2" / 15mm	31	18711288
BOSS PSD 250D	465	310	790	1/2" / 15mm	40	PSD 250
BOSS PSD 280D	600	390	790	1/2" / 15mm	46	PSD 280DS

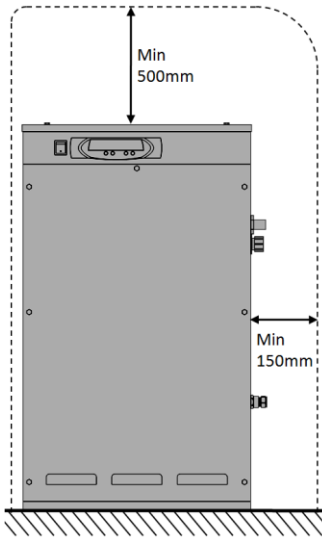
Description	Pump Quantity	Pressure Rating (PN)	Operating Pressure Range (Bar)	Mounting	Max System Volume (l)	Full Load Current (A)	Power Rating (Kw)	Required Supply Voltage
BOSS Midi PSD	1	10	1-5	Wall	50,000	3.4	0.5	240/1/50
BOSS PSD 250D	2	10	1-6	Floor	300,000	2 x 3.4	2 x 0.5	240/1/50
BOSS PSD 280D	2	10	1-8	Floor	300,000	2 x 5.6	2 x 0.75	240/1/50

Noise output	<75 dBA
Design Pressure	10.0 bar @ 100°C
System Temperature Range	0 - 90°C
Maximum Temperature at Point of Connection	70°C
Ambient Temperature Range	0 - 45°C
Fuse Rating	13 Amps
Safety Rating	IP 54
Maximum Turbo Runtime	168 hours (1 week)
Maximum Normal Downtime	180 minutes (3 hours)
Volt Free Contacts	Common Fault Contact

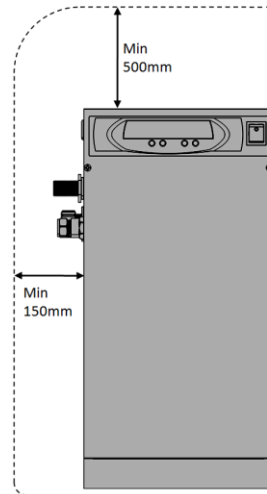
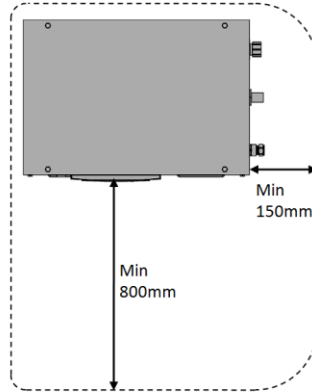
Typical Chilled System



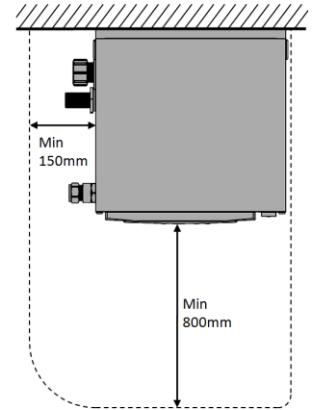
Clearance and connection requirements:



Floor standing (PSD)



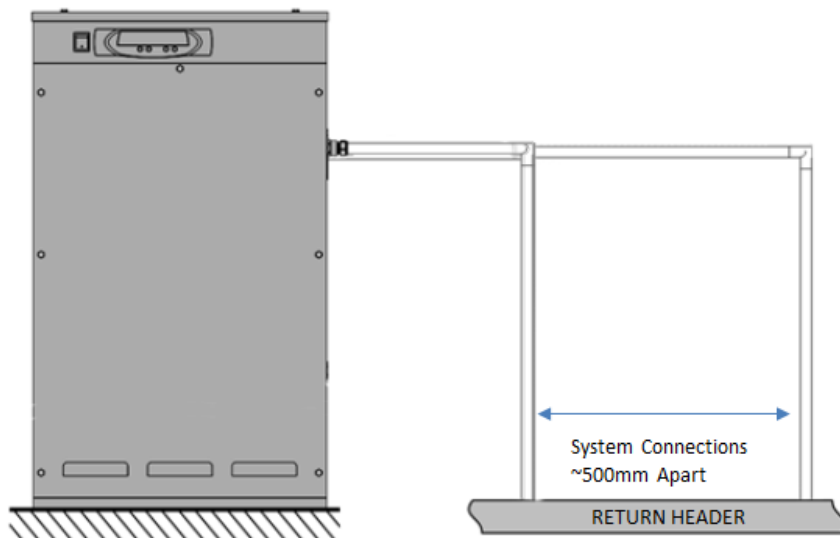
Wall Mounted (PSD)



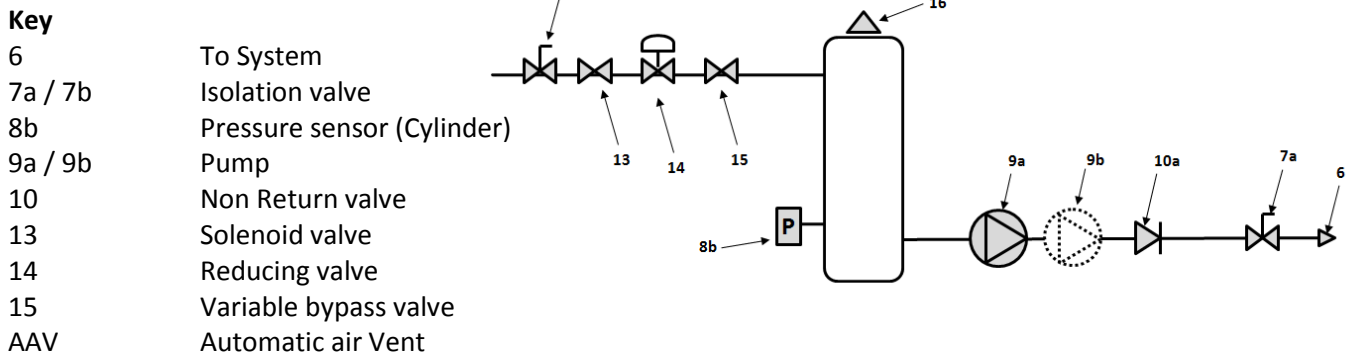
Installation & Placement:

The PSD should be installed in the return header to the heat exchanger.

Typical Installation Diagram: (Image for illustration purposes only) (Example: floor standing model)



Schematic layout:

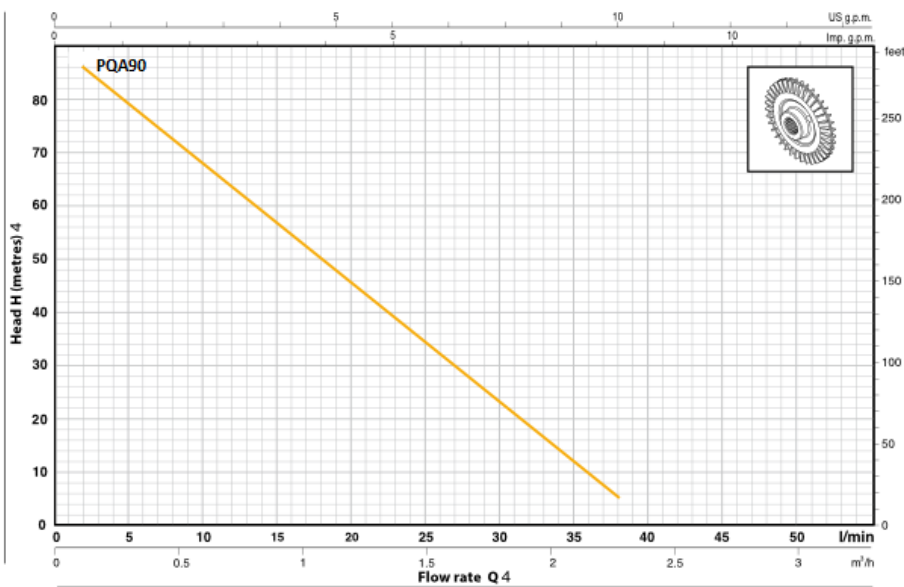
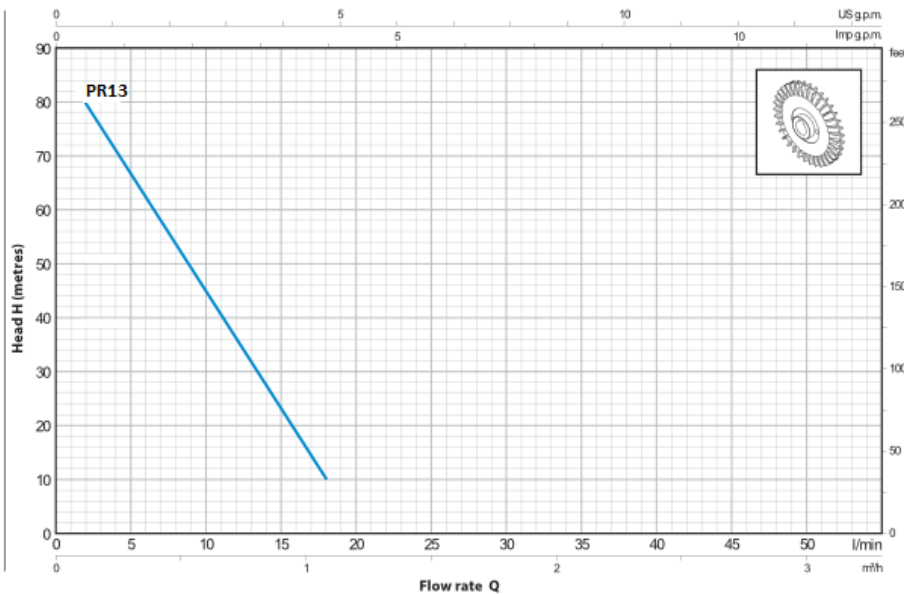


Pump Curve:

CHARACTERISTIC CURVES AND PERFORMANCE DATA

50 Hz n= 2900 1/min HS= 0 m

Pump Type	Pump Type
BOSS Midi PSD	PR13
BOSS PSD 250D	PR13
BOSS PSD 280D	PEDROLLO PQA90



Disclaimer: We reserve the right to change designs and technical specification of our products